

[schoolofnursing/MastersPrograms.ht](http://www.kennesaw.edu/schoolofnursing/MastersPrograms.htm)

- Career Growth MBA
- Georgia WebMBA
- MBA for Experienced Professionals

Website for all MBA programs:

<http://bookstore.kennesaw.edu>

http://www.kennesaw.edu/financial_aid

<http://www.kennesaw.edu/library>

Additional directory information appears on
inside back cover or visit

A KSU Campus Map is located in the back of this catalog or visit www.kennesaw.edu/maps

C v r r - G r r

770.423.6000

Y

.

Judiciary/Traffic <



enn

2007-2008
C

officer or a court of record determines that

As used herein, the term "publications"

Schedule of Credit Courses

Schedule of Credit Courses

in the Office of Admissions and the Registrar,

AS / A

catalog, official announcements, notices



Welcome to Kennesaw State University! You are attending a fine university, and during the course of this and upcoming years, it will become even better. KSU's faculty, staff, and administration are committed to excellence in everything we do, and I am sure that you, as a graduate student, are all learning. Indeed, to underline KSU's emphasis on graduate education, it is noteworthy that

At both the graduate and undergraduate levels, KSU is first and foremost a learning community, a diverse body of people of all ages, each of whom is striving to learn and to understand more about himself or herself, the world, and the many activities and endeavors that humans pursue. During your time here at Kennesaw State, you will discover many things about your self and your world, and you will grow in many ways as you improve your capabilities and skills. I wish you well in your journey of discovery and growth.

KSU has also long prided itself, and rightfully so, on being an engaged learning community. Kennesaw State's students, faculty, staff, and administration are engaged with each other; learn from each other; and help each other learn. Members of the KSU family are also engaged with the world beyond the campus, playing a large and growing role in business and industry, government and public affairs, and the service and support sectors, both as leaders and as active participants.

Again, welcome to Kennesaw State! I am pleased that you have chosen KSU as your university, and we all look forward to helping you learn, and to learning from you as we pursue excellence together.

Sincerely,

Daniel S. Papp
President



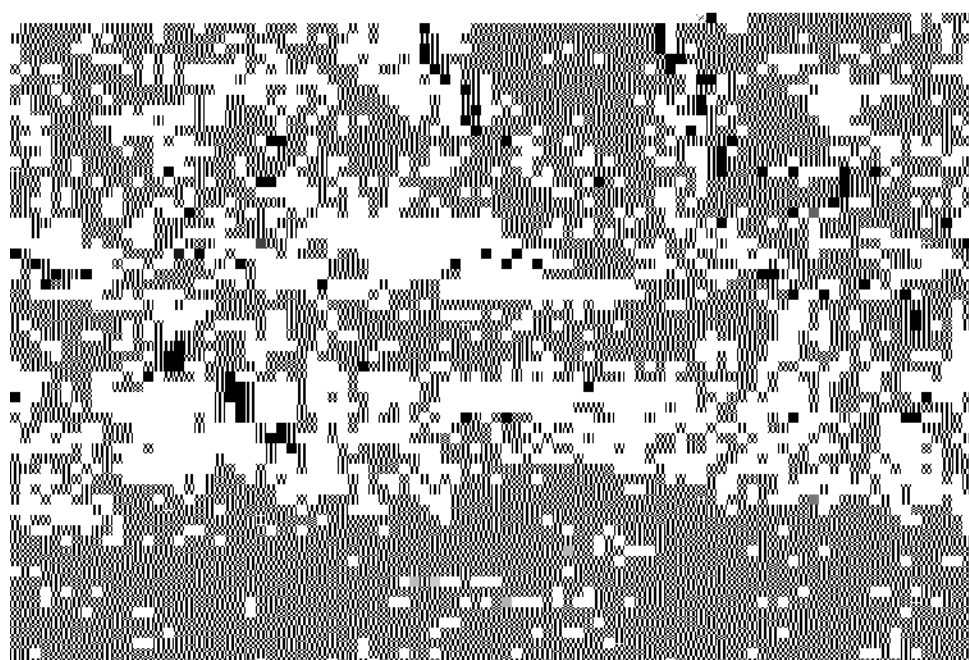
Ca	Il f. a i	See i	ide f. a	d back c	e
G. ad a e P. g a	f S d Li i g				1
Acade ic Cale da					
					13
Acade ic P. licie					27
Ma e. f Acc	i g				39
Ma e. f B i e	Ad i i . a i	P. g a			49
Ca. ee. G. f h	MBA				50
Ge. gia	Web MBA				65
C. le	E ec i e	MBA			69
Ma e. f Scie. ce i	A l i e d C. e	e. Scie. ce			75
Ma e. f Scie. ce i	C. f i c	Ma age e			83
G. ad a e a d P. G. ad a e	Ed ca i	P. g a			89
D. c. a e f	Ed ca i	(Ed.D.) i	Lea. h i f.	Lea. i g	
& Ed ca i	S ec i a l i	(Ed.S.) i	Lea. h i f.	Lea. i g	91
Ed.D. i	Lea. h i f.	Lea. i g			93

M.Ed. i. Ed ca i. al Leade. hi	114
M.Ed. i. Ed ca i. al Leade. hi (c. ce. a i. i. Ed ca i. al Tech. i. g. Leade. hi).....	117
M.Ed. i. I. cl. i. e Ed ca i.	

Graduate Degrees

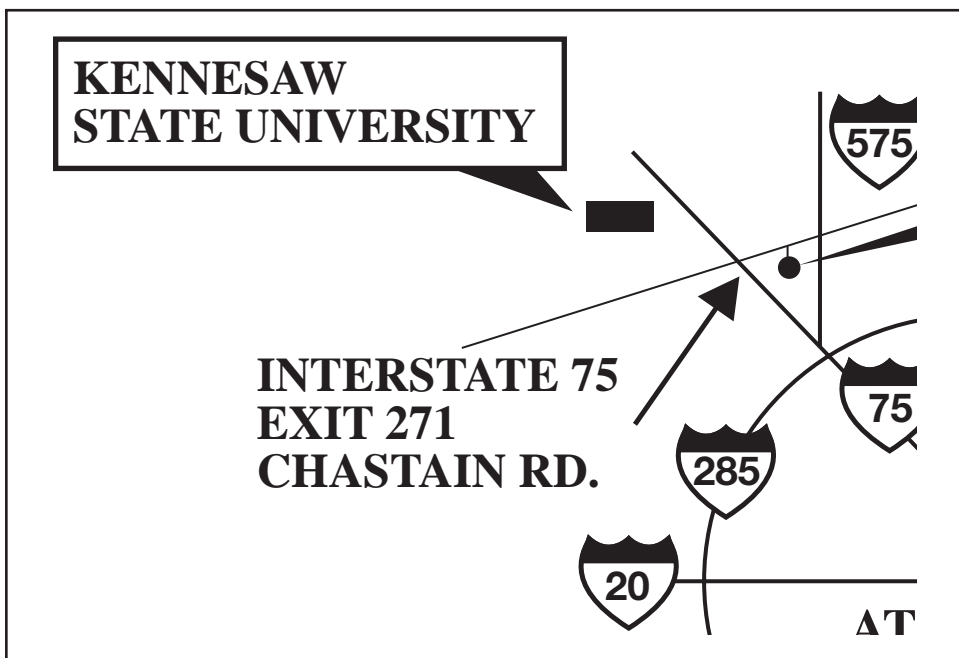
















receive a confirmation message indicating

are accepted to one graduate program specif



time for processing, the Office of Gradu

professionals should contact the program office

to the Office of Graduate Admissions when
the exam registration menu. Official test



results must be received before your file


this unofficial report for review purposes

receipt of official scores.

- Request that official transcripts from each

ered official.

1 -Y 14 L

admissions classifications (i.e. Freshmen,



2007-2008 Expenses/Fees

14 Tuition, Expenses, & Financial Aid

Mandatory Student Fees

Student Health Fees

- All graduate students receiving a tuition

- All undergraduate,

- All undergraduate and graduate students

Motor Vehicle Parking Fee

- All graduate students receiving fellowships

are valid for the duration of your official

the Office Annex, Building #14, Room #111

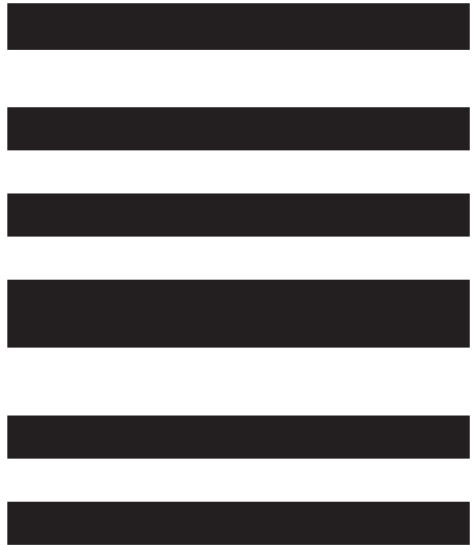
lost/stolen decal information to either office.

16 Tuition, Expenses, & Financial Aid

The Master of Science with a major in Applied Computer Science Program Fees

per semester over five semesters for a \$27,500

academic year and will be awarded on a first-come, first-serve-basis. The awards are based







Title IV financial aid. Federal Title IV financial

Withdrawals:



R. r
 H\YCZ\WcZ\h YFY| gdfU`|gh YWbhfU`
 Uxa |b|gdfU|h| YcZ\WfYgdc|bg|VYZcf`fY| |ghf
 |b| `gi XYblgza U|b|U|b|b| `h YdYfa UbYbh
 UWXYa |WYWF|XgzLxa |b|ghf|b| `h YFY| Ybhgñ
 Hg|b| Dfc| fUa Dc |WYgUbX`hghfY| |ghfU|cbz
 dYfZca |b| XY| fYU X|hgzYbZcfV|b| `h YUW
 XYa |Wdc|WYgcZ\h Yi b|j Yf|ghm|UbX| YbYFU`m
 Ybg f|b| `h Uighi XYblgñUWXYa |Wgg YgUFY
 XYUhk |h UWFU|Y`m|UbX`dfcZgg|cbU`ñ-b`
 UXX|hcbzh YFY| |ghfU`ñ|gh|UZ\UbX`Yg|fUbgZf`
 Y| Ui U|cbg|UbXJ YhfU|ñ|5 ZU|fg`FYei Yg`g`
 Zcf XUUZca `h YW`a di hf|ñ|Xgi Xyb
 fYWF|Xgnh`a UFYUddfcj YXVmh|gcZ\W`

5`fY| |ghfU|cb U|? YbbYgUk `GUH`Y b|j Yf|ghm|
 |gWbXi W`Xc| Yf`h Yk YUhi.

H\YFY| |ghfU|cb`dfcWggWb|g|g`cZ`h fYX|Z
 ZfYbhd`UgYg

cdYb`lc`WffYbhmi
 Ybfc`YXgi XYblg`k \c UFYbclcb`dfcVU|cb`"
 cdYb`lc`bYk`gi XYblgž
 gi XYblgk \c UFYcbUWXYa |WdfcVU|cb`Vi hi
 Y|| |VY|lc`fYhi fb UbXfYUxa |hXgi XYblg`"
 cdYb`lc`
 U`gi XYblgY|| |VY|lc`Ybfc`Zcf`hY| |j Yb`
 gYa Yghf`"

BCH9.GYh YUWXYa |WUWYbXUfzk \|W`|g|g`
 gdY|UWY| |ghfU|cb XUhgZUhk k k "_ YbbYgUk "
 YXi #fY| |ghfU|zh Y`Schedule of Coursesžcf`dU Y
 `cZ\h|gWUc| "



5i X|h|b| `cZWi fgYgk |`VYdYfa |hXZcf`
 fY| i `U`mYbfc`YX| fUXi UY`gi XYblgZUg`
 k Y`Ugcb Ug|UWU| U`U`VYUg|gZcf`hcgY`
 k \c`c`XU| fUXi UY`XY| fYYZca `? YbbYgUk`
 GUH`5i X|h|b| `cZWi fgYg|gbchU`ck YX|b|`
 7c`Yg9l YW|hj YA 65ZA Ughf`cZG|WbW|b|`
 7cbU|W|A UbU| Ya YbhfA G7A Ezh YA Ughf`
 cZG|WbW|b|bZfa U|cb Gng`h`a gfa G-GZ





hYA Ughf'cZGMbW]b'5 dd`jYX'7ca di hf'
 GMbWfA G5 7CEdfc[fUa g'cf UbncZ? G i'g'
 A Ughf'cZ9Xi W]cb fA '9X'Edfc[fUa g"Gi
 Xybl'ga i gi`Uj YW'a d`YhXU`dfYfYei]gh'g'
 bYwggUmzcf h'YWi fgY'lc VYU X]hX'UbXUFY
 Yl dYwX'lc W'a d`YhU`Wi fgY'fYei]fYa Ybl'g'
 UgbchX'cb h'YWi fgY'gni`Um g"5 gi Xybl
 a UnU X]hbc'a cfYh'Ub * WYX]h'ci fg'cZ
 [fUXi Uh'Wi fgY'k cf_]bU[]j Yb'hfa "

H'YdYfa]gg]cb'lc U X]hZ'fa zUj U'WY]b'hY
 CZ'WcZh YfY]]gh'fUza i gh'VYg Va]hX'VZ'fY
 h'YbX'cZUb'fY]gh'fU]cb"H'YZ'fa `a i gh'VY
 g[bX'Vmh'Y; fUXi Uh'YDfc[fUa 8]fYw'f'cZ
 h'Ydfc[fUa `cZf]b[h'YWi fgY'lc VYU X]hX"
 5i X]hX'Wi fgY'gWi bhUz `j Ui Y]b'Wa di h
]b[h'Ygi Xybh'g'Wi fgY'UbXZ'Yg`cUX"H'Y
 gi Xybh'g'bUa Yk]`UddYUf'cb'h'YcZ'U'W'U'g'
 fc`gcZh YWi fgY'gU X]hX'Z'Ugk Y`Ugh'Ygi
 Xybh'g'Uddfcj YX'gWYXi `YcZ'Wi fgY'g`B c WYX]h
]g[fUb'hX'Z'f'U X]hX'Wi fgY'gZ'UbX'gi Xybl'g'UFY
 bchdYfa]hX'lc WUb[Ylc'cf Z'ca Ub'U X]h]b[`'
 g'Uli g'Y Wd'h'h'fci [\ h'YfY]i `U'f'f'cW'Xi fgY'Z'f'
 g'WYXi `Y'WUb[Yg"

H'Y] fUXY'Z'f'U X]h]b[]gJ fj]g]h'fZ'UbX'h]g'
 [fUXYk]`Uhbc'h'a YVY'WUb[YX'lc UK `cb'h'Y
 VU]g'cZh YU X]h'cf'g'Uhh'bX'UbW']b'h'YWi fgY"
 H'Y] fUXY'cZJ `k]`^Uj Ybc YZ'W'Wi dcb'h'Y
 gi Xybh'g'[fUXY]dc]bhUj YfU Yz'UbX'gi Xybl'g'
 k]`bch'VYdYfa]hX'lc `Uj Yh'YU X]h] fUXY
 WUb[YX'Uh'UmZ' h' fYX'U'h"5i X]hX'Wi fgY'g'
 k]`bch'Wi bh'ck UFX'X] fY'Y'Wa d`Y]cb Z'f'



Cross Registration—Atlanta
Regional Consortium for Higher
Education (ARCHE)

gi Xyblg'cZU'U`mYbfc`YX'lb'5 hUbfUY' jcbU'

lbg'li h'cb"HAY'lb'bhjg'tc U'ck 'ei U'jUYXgi

Umf h YÚgh& k cf_]b[XhgcZh Ygá Yg

WUf Zca Ua cb[h YUj Ya Ya Vfg**

UbXcb`m]b`h`U`WgZUgi`Xybha`UmU`Y`
U`bU`k`f]Hh`UddYU`lc`h`Yj`JWdfYg]

<]g#\`Yf`XW]g]cb]g`U`bU`"B`c`Z`f`h`Yf`

``@``B`c`h`]b[`]b`h`]g[`f`U`X`Y`U`d`d`Y`U`d`f`c`W`g`g`

cZa`Y`X]U]cb`h`f`c`i`[`\`h`Y`C`Z`U`W`c`Z`h`Y`

k]h]b`g]]mX]ng" H\ Y99C` cZ]Wf`ftf`

Y]h Yf`dU]m"H\ Y99C` cZ]Wg\U`fY]U]b`

H]W]bZ`fa U]cb`cZ]h Y]U] Ya Ya Wf]g`cZ

99C` cZ]Wf`ftf`\]g#\ Yf`XYg]]bY]E"=Z]Ug

W]a a]H]Y]Z]h Y99C` cZ]Wf`ftf`\]g#\ Yf`

"9""D]f]cf]fc]h Y\ YU]f]b]]h Y99C` cZ]Wf`

Y]W]U]W]U]f]Z]ca` U]a`cb]]h Y]U] Ya Ya

B`c`ch`Yf`dY]f]g`bg]g\U`V]Y]d]f]Y]g]b]h]i`b`Y]g]g`

cZ]Wf`ftf`\]g#\ Yf`XYg]]bY]E"

k]`V]Y]V]U]g]X]cb`U]a`U]cf]]m]j`ch]Z]U]b]X`

C]b`m]h`Y]U] Ya Ya Wf]g`cZ]h Y]U]X`\c]W`

XY]V]U]f]U]cb`Y]]W]d]h]h`U]h]h`Y99C` cZ]Wf`

fc`V]Y]b]ch]U]Y]X`]b`k`f]]h]b]]U]h`Y]U]g]h]h]b`

]b`k`f]]h]b]]c]Z]h`Y]g]d]Y]W]U]W]b]U]h`f]Y]c]Z]h`Y`

H\ Y99C` cZ]Wf`ftf`\]g#\ Yf`XYg]]bY]E

W]g]g]f]]\]]g]U]f]Ya` Y]h`H\ Y99C` cZ]Wf`ftf`

]b]]U]g]U]b`c]V]g]f]j`Y]f`H\ Y99C` cZ]Wf`

WNY]h]b k f]Hb[k]h]b Új YVi gbYgg'

99C :cZÚMf :tf \]g# \ Yf XYgl[bYfzh.Y
WjYZ`Y[U :cZÚMf :cZh Yi b]j Yfg]hñUbX

X]ggUhgÚXk]h h YdfYg]XbñgXWg]cbž

Expectations for Satisfactory Graduate Level Student Performance

I. Academic Warning

G VYWltc h Y`ja]HhcbgUbX`ei U]UW]hcbg`

a UnVYU`YXXi f]b| h Yg`a Yghf`dfYWX]b|`
h YUbu`g`a Yghf`cf`g` a a Y`hfa `cZbfc`
a YbhM`ha i ghVYU`YXVYZ`fYh`YbX`cZ`h`Y`
U`fghk`Y`_`cZ`\\g`#`Y`Ubu`g`a`Yghf`H`lg`

X]fYW`f`f`g`c`Z`U`W`

cZ%`UX]hcbU`^`ci`fg`]b`Y`Wgg`cZ`U`bmi`
^`ci`fgi`g`X`l`ek`U`FX`h`Y`U`fg`ia`U`ghf`f`g`

X]dYbX`cb`gd`W]U`W`X]`f`Y`f`Y`ei`]`f`Y`a`Y`b`lg`

Multiple Graduate Degrees

h Yg`W`b`X`X`Y]`f`Y`U`b`X`h`Y`Y`U`Z`M`Z`U`^`U`^`

5`cb|`k`]h`c`h`Y`f`f`Y`ei`]`f`Y`a`Y`b`lg`U`g`d`W]U`W`X`V`mi`

Ua`]b|`a`i`a`c`Z`%`^`ci`fg`c`Z`U`d`f`c`d`f`]`U`h`W`i`f`g`Y`

k`]`^`X`d`Y`b`X`c`b`gd`W]U`W`X]`f`Y`f`Y`ei`]`f`Y`a`Y`b`lg`

U`^`U`^`f`Y`ei`]`f`Y`a`Y`b`lg`Z`f`h`Y`g`W`b`X`a`U`ghf`f`g`

Double Majors and Concentrations in a Single Degree Program

-b`|`f`U`X`i`U`h`d`f`c`|`f`U`a`g`k`]h`gd`W]U`W`b`W`b`
h`f`U`h`c`b`g`c`f`a`U`c`f`g`f`h`Y`A`5`DK`Z`A`D`5`z`U`b`X`

UX]hcbU`a`U`c`f`c`f`W`b`W`b`h`f`U`h`c`b`f`k`]h`]b`h`Y`
gd`W]U`Y`X`

cf`|`]b`U`W`b`W`b`h`f`U`h`c`b`c`f`a`U`c`f`U`b`X`V`n`i`W`a`
d`Y`h`b|`U`b`n`i`g`d`W]U`f`Y`ei`]`f`Y`a`Y`b`lg`c`Z`h`U`h`a`U`c`f`

a`U`c`f`k`]`^`Y`W`b`U`fa`Y`X`V`n`h`Y`C`Z`U`W`c`Z`h`Y`

Sci`V`Y`A`U`c`f`#`7`c`b`W`b`h`f`U`h`c`b`f`Y`ei`Y`g`i`c`f`a`g`

U`b`X`a`U`n`V`Y`U`^`Y`X`X`i`f`]b|`h`Y`g`a`Y`ghf`d`f`Y`
W`X]b|`h`Y`U`b`U`g`a`Y`ghf`c`f`g`a`a`Y`h`f`a`c`Z`
Y`b`f`c`^`a`Y`b`h`M`h`a`i`gh`V`Y`U`^`Y`X`V`Y`Z`f`Y`h`Y`b`X`
c`Z`h`Y`U`f`g`h`k`Y`_`c`Z`\\g`#`Y`U`b`U`g`a`Y`ghf`

X]fYW`f`f`g`c`Z`U`W`

Academic Fresh Start for Readmission

U`h`Y`U`h`i`g`l`m`U`f`g`za`U`n`i`d`Y`h`i`h`c`b`]b`h`Y`C`Z`U`W`c`Z`

H Ygi XbñgUX1 ghX[fUXYdc]bhUj Yf
Uj Yk j` VYfYUX1 ghXUZh` h YYbXcZh Y

ÚbU`XY[fYYU X]h`-b`UX]hcbzcb`m[fUXYg

Academic Fresh Start for Second Degree

5X1 ghX; D5 f5; D5 LFYgUfhXUhh Yhja Y
Xyblga i ghidY]hcb`h YCZÚWcZh YFY[]gfU'

KSU Telecommunication Policies



Accounting

Master of Accounting (MAcc)

Office: Executive Development Center,

Fax: (770) 423-6141

Email: strue@kennesaw.edu

Web address: <http://coles.kennesaw.edu/mba-options/macc/>

All graduate and undergraduate business degree programs at Kennesaw State University are accredited by AACSB International—The Association to Advance Collegiate Schools of Business (<http://www.aacsb.edu>). The accounting degree programs also hold specialized AACSB accounting accreditation.

Vision and Mission Statements, Michael J. Coles College of Business

The Coles College of Business aspires to be the preferred provider of timely, flexible business education and relevant, applied research and practice valued by the marketplace.

The Coles College of Business provide high quality, applied business education and knowledge creation in a collegial, stimulating, and supportive learning-centered environment. Predominantly serving residents and the business community of the metropolitan Atlanta and the Northwest Georgia region, we strive to develop our students into highly effective and ethical business leaders who are prepared for an increasingly complex, technologically sophisticated and interdependent world. We offer innovative and flexible programs through a diverse and talented pool of faculty and staff who contribute to the professional and ethical standards of their respective disciplines. In all our activities, we treat **M M S** respect and are focused on the continuing development of our students, faculty and staff, and communities.

– Revised March 2007

Career Growth MBA Students

The following parameters apply to MBA students who wish to take 8000-level accounting courses as their MBA electives: (See details in the program description below.)

- Must complete ACCT 8000, which is a pre-requisite for all MAcc graduate courses
- Must hold a baccalaureate degree in accounting or must complete all under-graduate accounting pre-requisite courses required for MAcc students
- May take ACCT 8990 as an elective only after completion of 12 hours (four 8000-level, graduate courses) including ACCT 8100 and ACCT 8400
- May not use ACCT 8990 to satisfy MGT 8999

General Requirements for

Admission to the MAcc Program

Admission to the MAcc program is granted to those persons showing high promise of success in graduate accounting study. The requirements for all applicants are:

- Baccalaureate degree from an institution accredited in a manner accepted by Kennesaw State University.
- Minimum cumulative adjusted grade point average of 2.80 on a 4.0 scale.
- Minimum total score of 500 on the Graduate Management Admissions Test (GMAT).

International applicants have additional requirements; see Graduate Admissions section of this catalog.

Transfer Credit

Students may transfer a maximum of six semester hours of graduate course work with grades of B or better taken at an institution accredited in a manner acceptable to KSU provided the transfer hours are made prior to the last 24 hours of course work. These courses may be no more than six years old at the time of acceptance, and they must be relevant to the MAcc program. Special hardship cases, such as job transfers, will be decided on an individual basis by the program director. The transfer of credit for course work completed at another institution will be approved only under the following conditions:

1. The course was completed at an institution accredited in a manner accepted by KSU.
2. A minimum grade of "B" was received in the course.
3. The course was restricted to graduate students only.
4. The content of the course corresponds to that of a course required or permitted in the student's program at Kennesaw State University.
5. The credit to be considered for transfer will not be more than six years old at the time the student enters Kennesaw State University.
6. A request for consideration of transfer credit must be submitted to the director of the MAcc program by the student concerned during the first semester of residence here. The request must indicate the specific course(s) for which transfer credit is sought. A copy of the other institution's transcript and a course description from the catalog must be submitted. A course outline may also be required.

Grades

Expectations for satisfactory graduate level student performance are detailed in the Academic Policies section of this catalog.

Grades and hours earned in the business foundation courses are included in computing graduate grade point average. As and Bs are expected.

Students who must take the undergraduate accounting prerequisite courses must obtain an average grade of B or better in those courses. Classes may be retaken to achieve this average.

Petition to Graduate

Each MAcc student must petition to graduate the semester prior to completion of program requirements. To request a petition, go to <http://coles.kennesaw.edu/mba-options/career-growth-mba/advising/cg-intranet.html>. The Graduate Business Office will prepare a petition and e-mail it to the student's preferred e-mail account. Directions on filing the petition with the Office of the Registrar will be included.

Changing from Non-Degree
to Degree Status

Business Foundation Requirements

Foundation requirements are the knowledge and skills of a broad set of business disciplines including accounting, business law, economics, finance, management, marketing, and statistics and math. Academic preparation in these disciplines is necessary prior to advanced study

Accounting Prerequisites Courses

Credit Hours
12

ACCT 8400. Seminar in Auditing. 3-0-3.

Prerequisite: Admission to the MAcc program and ACCT 4150 or ACCT 8000 and ACCT 4150 or their equivalents.

A study of financial audits, assurance services, and internal audits. Emphasis is on current developments.

ACCT 8510. Tax Research and Procedure. 3-0-3.

Prerequisite: Admission to the MAcc program and ACCT 3200 or ACCT 8000 and ACCT 3200 or their equivalents.

An introduction to the U.S. federal tax system, including research processes, tax practice, and procedural issues. This course is intended to strengthen students' problem solving and communication skills in a tax research setting. Electronic tax research services are used in the search for applicable tax authority.

ACCT 8520. Corporate Tax and Shareholders. 3-0-3.

Prerequisite: Admission to the MAcc program and ACCT 3200 or ACCT 8000 and ACCT 3200 or their equivalents.

A study of the federal income taxation of corporations and shareholders. Topics covered include corporate contributions, distributions of shareholders, stock redemptions, and corporate liquidations.

ACCT 8530. Taxation of Flow-Through Entities. 3-0-3.

Prerequisite: Admission to the MAcc program and ACCT 3200 or ACCT 8000 and ACCT 3200 or their equivalents.

An advanced study of the federal income taxation of flow-through entities, including partnerships, S Corporations and Limited Liability Companies. Topics include contributions and distributions from a flow-through entity; reporting of profits, gains and losses; complete and partial liquidations; and the partnership special allocation rules.

ACCT 8550. Estate and Gift Taxation. 3-0-3.

Prerequisite: Admission to the MAcc program and ACCT 3200 or ACCT 8000 and ACCT 3200 or their equivalents.

A study of federal estate and gift tax laws involved in inter vivos and testamentary transfers of property. Tax-planning techniques designed to minimize transfer taxes and ensure the orderly transfer of assets to succeeding generations are explored, as are the use of outright and charitable gifts, trusts, and generation skipping transfers.

ACCT 8570. Selected Topics in Taxation. 3-0-3.

Prerequisite: Admission to the MAcc program and ACCT 3200 or ACCT 8000 and ACCT 3200 or their equivalents.

An intensive study of selected topics of current interest, which might include, among others, advanced corporate taxation, state and local taxation, deferred compensation, and accounting periods and methods.

ACCT 8900. Special Topics in Accounting. 1-3. (Repeatable).

Prerequisite: Admission to the MAcc program and ACCT 3100 or ACCT 8000 or its equivalent and approval of instructor and department chair prior to registration.

Selected contemporary topics in accounting of interest to faculty and students.

ACCT 8940. Directed Studies in Accounting and Taxation. 1-3. (Repeatable not to exceed 6 semester hours).

Prerequisite: Admission to the MAcc program and ACCT 3100 or ACCT 8000 and approval of instructor and department chair prior to registration.

Special topics of an advanced or specialized nature not in the regular course offerings.

ACCT 8950. Special Projects in Accounting. 1-3. (Repeatable).

Prerequisite: Admission to the MAcc program and ACCT 3100 or ACCT 8000 and approval of instructor and department chair prior to registration.

Special projects for students who wish to pursue advanced work on a particular subject in a specialized area of accounting.

ACCT 8990. Forensic Accounting. 3-0-3.

Prerequisite: Admission to the MAcc program and completion of 12 hours of 8000-level graduate courses including ACCT 8100 and ACCT 8400 or ACCT 8000 and completion of 12 hours of 8000-level graduate courses including ACCT 8100 and ACCT 8400. Before registration, students must submit this online form: <https://coles.kennesaw.edu/mba-options/MACC/advising/gradpetition.pl>

This course examines current issues in forensic accounting and fraud investigation, including the nature of fraud, who commits fraud, types of fraud (fraudulent financial reporting, asset misappropriation, etc.), fraud prevention, fraud detection, fraud investigation / prosecution, and non-fraud forensic accounting services. The course is designed for graduate accounting students with strong backgrounds in financial accounting and auditing. The course will be taught in a seminar format with a great deal of interaction in class.

BISM 8900. Special Topics in Business
Information Systems. 3-0-3. (Repeatable).



Business Administration

and flexible programs through a



A. Coles College of Business

B. Coles College of Business MBA

their acceptance letters which foundation requirements, if any, must be satisfied.

C. Coles College of Business

ing accounting, finance, and statistics and math. Academic preparation in these disciplines is necessary to satisfy all foundation requirements. As an alternative, the Coles College of Business offers three



C. B. B. V. B. M. S:

Prerequisites - 36

Prerequisites - 39

ACC 8230. A . 3-0-3.

The figures shown after the course number and title

ACC 8230. A . 3-0-3.

Prerequisite: Admission to the MAcc program and ACCT 3300 or ACCT 8000 and ACCT 3300 or their equivalents.

ACC 8000. A . 3-0-3.

Prerequisite: Admission to the Career Growth MBA.

ACC 8270. A . 3-0-3.

Prerequisite: Admission to MAcc and ACCT 3300 program or ACCT 8000 and ACCT 3300 or their equivalents.

that will provide direct benefits in the work

ACC 8300. A . 3-0-3.

Prerequisite: Admission to the MAcc and ACCT 3300 or ACCT 8000 and ACCT 3300 or their equivalents.

ACC 8100. A . 3-0-3.

Prerequisite: Admission to MAcc program and ACCT 4050 or ACCT 8000 and ACCT 4050 or their equivalents.

A study of financial accounting theory, including

ACC 8400. A . 3-0-3.

Prerequisite: Admission to MAcc program and ACCT 4150 or ACCT 8000 and ACCT 4150 or their equivalents.

A study of financial audits, assurance services, and internal audits. Emphasis is on current

ACC 8110. A . 3-0-3.

Prerequisite: ACCT 8100.

e.g., accounting for post employment benefits, financial statement analysis techniques.

ACC 8510. A . 3-0-3.

Prerequisite: Admission to MAcc program and ACCT 3200 or ACCT 8000 and ACCT 3200 or their equivalents.

ACC 8220. A . 3-0-3.

Prerequisite: Admission to MAcc program and ACCT 3100 or ACCT 8000 or its equivalent.

Electronic tax research services are used in the



ACCT 8520. Corporate Tax and Shareholders. 3-0-3.

Prerequisite: Admission to MAcc program and ACCT 3200 or ACCT 8000 and ACCT 3200 or their equivalents.

ACCT 8530. Taxation of Flow-Through Entities. 3-0-3.

Prerequisite: Admission to MAcc program and ACCT 3200 or ACCT 8000 and ACCT 3200 or their equivalents.

of flow-through entities, including partnerships,

from a flow-through entity; reporting of profits, gains and losses; complete and partial liquidations;

ACCT 8550. Estate and Gift Taxation. 3-0-3.

Prerequisite: Admission to MAcc program and ACCT 3200 or ACCT 8000 and ACCT 3200 or their equivalents.

A study of federal estate and gift tax laws

of property. Tax-planning techniques designed to

transfer of assets to succeeding generations are explored, as are the use of outright and charitable

8610. B

. 3-0-3.

Prerequisite: Admission to the Career Growth MBA or MAcc program.

A study of economic, financial, political, social,

and analyzing practices of business firms operating

8640, B C A

. 3-0-3.

Prerequisite: ECON 8010 or equivalent.



BA 6102 . 1-0-1.

Prerequisite: Admission to the Career Growth
MBA or MAcc program.

of corporate and managerial finance. Topical

MGT 8120. **L** **3-0-3.**
Prerequisite: MGT 8800.

areas such as EEO, Americans with Disabilities Act, Age Discrimination in Employment, Family Leave Act, Employee Retirement Income Security Act, Fair Labor Standards Act, Taft Hartley Act, and Occupational Safety and Health Act.

such as bottleneck identification (weakest link)

MGT 8520. **C** **3-0-3.**
Prerequisite: Admission to the Career Growth MBA or the MAcc program.

MGT 8200. **C** **3-0-3.**
Prerequisite: Admission to the Career Growth MBA or MAcc program.

neurship and of creativity-intensive firms. The

MGT 8530. **A** **3-0-3.**
Prerequisite: Admission to the Career Growth MBA or the MAcc program.

systems designed for creating a more efficient

MGT 8410. **C** **3-0-3.**
Prerequisite: Admission to the Career Growth MBA or MAcc program and BISM 2100 and MGT 3100, or their equivalents.

MGT 8540. **3-0-3.**
Prerequisite: FIN 8020 or equivalent or permission
Prerequisite: Admission to the Career Growth MBA or the MAcc program.

influence of communication processes on decision

MGT 8490. **3-0-3.**
Prerequisite: Admission to the Career Growth MBA or the MAcc program.

In the first phase, management of innovation

CPS steps which consists of finding problem or

event, manufacturing/office cells, mistake proof





MBA 8910. Prerequisite: Admission to the Career Growth MBA or MAcc program. **3-0-3.**

MBA 8900. Prerequisite: Admission to Career Growth MBA or MAcc, permission of instructor and approval of program director. **3-0-3.**

62 Master of Business Administration Programs

MKTG 8710. Consumer and Buyer Behavior. 3-0-3.

Prerequisite: MKTG 8030 or equivalent.

MKTG 8770. Sales Management Decisions. 3-0-3.

Prerequisite: MKTG 8030 or equivalent.

MKTG 8720. Strategic Product Management. 3-0-3.

Prerequisite: MKTG 8030 or equivalent.

MKTG 8780. Business to Business Marketing. 3-0-3.

Prerequisite: MKTG 8030 or equivalent.

MKTG 8730. International Marketing Management. 3-0-3.

Prerequisite: BISM 2100 and MKTG 8030 or their equivalents.

k]h` dfcXi Vgg: X'lc` ch`Y'Vi` gbYgg'Úfa`g'

MKTG 8790. Applied Global Business Strategies. 3-0-3.

Prerequisite: Admission to the Career Growth MBA or MAcc program or permission of instructor.

\ck j`Urn]b[` Ybj`]fcb`a` YbHU` Z`fWg]bÛi` YbW`

\ca`c[`Yb]n]b[` Z`fWg]bÛi` YbW[` `cVU`g]LbXUX`

`Yj` YfU` Y'h` Y'Úfa` ñ`dcg]hcb` UbX'Wa` dYhbVWg]c`

MKTG 8740. Sports Marketing. 3-0-3.

Prerequisite: MKTG 8030.

MKTG 8900. Special Topics in Marketing. 3-0-3. (repeatable).

Prerequisite: Admission to Career Growth MBA or MAcc, permission of instructor and approval of program director.

MKTG 8750. Applied Marketing Research. 3-0-3.

Prerequisite: BISM 2100 and MKTG 8030 or equivalents.

]Xyb]h'ÚW]hcb` UbX'UbUng]g`d` Ubb]b[` zXYW]g]cb`

Georgia WebMBA

B

including accounting, business law, economics, finance, management, marketing, and statistics
business and accounting. A bachelor's degree in business or accounting typically satisfies all



66 MBA B A P

C MBA

The figures shown after the course number

MBA 1000. 1-0-1. MBA 1-0-1.

MBA 6000. B

MBA P

to business cash flows, evaluate the acceptability of short-term and long-term financial

MBA 6080
3-0-3

on firms, industries, and the organization of work.

MBA 6100
3-0-3

tions management. Emphasis is on managerial

MBA 6110, B 3-0-3

order to determine a firm's strategies for long-

Coles Executive MBA

Office: KSU Center, Suite 431
Phone: (770) 420-4MBA (4622)
Fax: (770) 420-4444
Email: mbrooks@coles2kennesaw.edu
Web address: www.colesMBA.com

The Coles Executive Master of Business Administration (MBA) degree is an innovative, interactive, integrated program incorporating real-life experiences into every component. The program is process-oriented rather than functionally-oriented and taught in a team environment that simulates the workplace. Individuals completing the program become complete managers and leaders with new ideas, broad perspectives, technology awareness and an expanded business network.

General Requirements for Admission to Coles Executive MBA

The Coles Executive MBA program is limited to talented men and women who and

has done accredited graduate work, the most recent two-year adjusted GPA will be used in the admissions consideration.

An applicant will not be admitted until a completed application, current resume, an official GMAT score or GMAT Waiver; two letters of recommendation and official transcripts for all undergraduate and graduate courses have been received and evaluated and a satisfactory admissions interview has been completed. Admissions decisions are determined by the College of Business Graduate Admissions Committee and are communicated in writing by the College of Business Graduate Admissions Committee to the applicants as soon as is practical after materials have been received and evaluated.

Program Fees

The cost for the 18-month program is \$45,000. This fee includes a nonrefundable deposit of \$500 which is due upon acceptance to the program. The remaining \$44,500 is prorated over the entire program. Meals, textbooks, notebook computer, lodging and meals at Opening Residency and International Residency are included in this fee, exclusive of international airfare.

Transfer Credit

Student associates enrolled in the Coles Executive MBA program will not be given credit for courses taken at other institutions.

Candidacy

Student associates will be admitted to candidacy upon successful completion of 9 semester hours of course work with a minimum cumulative grade point average (GPA) of 3.0 and a grade of "C" or better in each course presented for candidacy. Student associates not achieving a minimum cumulative GPA of 3.0 after the completion of 9 credit hours will be admitted to candidacy at such time as they achieve a 3.0 minimum GPA.

Grades in Graduate Courses

Student associates must earn a grade of "C" or better in every graduate-level course. They must also achieve a GPA of at least 3.0 in:

1. all 7000 and 8000-level GBA courses, and
2. in all graduate-level courses.

Petition to Graduate

Each MBA student associate must petition to graduate at least one semester prior to completion of program requirements. The student must contact the Executive MBA Office and request a petition. A petition will then be prepared and mailed to the student associate's home address.

Admission Criteria for Non-Degree Student

Students classified as non-degree students are not permitted to enroll in Coles Executive MBA courses.

The Coles College Executive MBA Program allows an individual to earn an MBA degree without interrupting his or her career. Students become members of a "cohort" class - grouped into separate teams -- which remains intact for the duration of the Program. The functionally-integrated curriculum is delivered by a team of graduate faculty who teach *exclusively* in the Executive MBA Program and who, like the students, themselves have significant business experience in addition to their academic credentials.

Unlike other MBA Program formats, the Coles College Executive MBA curriculum is truly customized for mid-career executives seeking a value-based educational experience to augment their career accomplishments to date and achieve personal future career goals. In addition to a traditional business acumen foundation, the integrated curriculum differentiates itself in three important areas: 1) a strong focus on teaming as a part of the overall learning experience; 2) program-long personal coaching, including training of each student's personal coach; and 3) a unique global business learning component involving a seven-month joint project with

students

specific bu

bu

bu

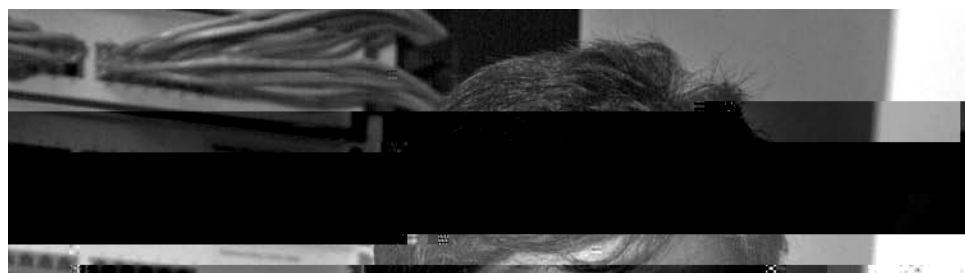
e c

bu

bu



GBA 7251. Application of Business
Acumen and Leadership. Credit hours:
6/9-0-6/9.
This



Graduate programs in education offered by Kennesaw State University are fully accredited by the National Council for Accreditation of Teacher Education and meet the Georgia Professional Standards Commission Program Standards.

Education

Collaborative Development
of Expertise in Teaching
and Learning

of growth from novice to proficient to expert

guages (TESOL). Certified teachers may apply



Doctorate of Education (Ed.D.)
in Leadership for Learning &
Educational Specialist (Ed.S.)
in Leadership for Learning

Office: KH 3119

Phone: (770) 423-6636

Fax: (770) 499-3659

allocated. After successful completion of the first 18 hours of common core courses and 15 hours of concentration courses, candidates are awarded a master of education degree. After successful completion of the remaining 12 hours of concentration courses, candidates are awarded a master of education degree with a concentration in the field of study.

Ed.D. Common Core in Distributed Leadership for Learning 27

building networks of influence and working across boundaries. Candidates are introduced to

understanding of and proficiency in a variety of distributed leadership roles and demonstrate

EDL 8000	Foundations of Leadership for Learning
EDUC 8100	Advanced Study of Learning
EDUC 8300	Intercultural Communication and Global Learning
EDRS 8000	Applied Quantitative & Qualitative Research
EDL 8100	Critical Issues in School Transformation
EDRS 8900	Applied Field Research
EDRS 9100	Advanced Qualitative Research Methods
EDRS 9200	Advanced Quantitative Research Methods
EDUC 9800	Doctoral Seminar
EDUC/ECE/EDAD/ENED/INED/ITEC/MAED 9900	Dissertation

Ed.D. Concentration Options 27

colleagues. Candidates have five concentration options in the Ed.D. program—Adolescent

Dissertation (nine hours, minimum) 9

Concentration Descriptions and Courses

Credit Hours

Adolescent Education- English/Language Arts 27

The Ed.D. in Adolescent Education—English/ Language Arts concentration is designed for educators who are currently certified to teach English, Language Arts, or a closely related field (for

in graduate-level English, English Education, Language Arts, or a closely related field. Gradu

Education's Conceptual Framework—the Collaborative Development of Expertise in Teaching, Learning, and Leadership—graduates of the program are prepared to serve as collaborative

The Adolescent Education - Mathematics 27

rently certified to teach mathematics at the middle or secondary level and who have previously

Adolescent Education Core 12

EDAD 8100 Curriculum Theory & Practice in Middle & Secondary Schools

EDAD 8200 Supervision, Mentoring & Advocacy in Mid & Sec Schools

EDAD 8300 Critical Analysis of Educational Policy for Teacher Leaders

EDAD 8400 Internship in Teacher Development or Teacher Education

EDAD 9300 Critical Issues for Student Learning: (Topic)

EDAD 9350 Doctoral Directed Study in Adolescent Education

TEACHING FIELD OR TRACKS

English/Language Arts 15

English/ Language Arts Core: Required Courses (9hours) 9

ENED 8310 Applied Theory and Research in Writing

ENED 8701 Applied Theory and Research in Literature

ENED 9400 Designing and Conducting Research in English/ Language Arts Education

ENED 8741	Digital Media and Pedagogies in English/Language Arts Education
ENED 8998	Internship in English/Language Arts Education
ENED 9300	Critical Issues in Student Learning (Topic)
ENED 9350	Doctoral Directed Study
ENED 9375	English/Language Arts Program Assessment
PRWR 6280	Business and Technical Editing

Credit Hours

EARLY CHILDHOOD EDUCATION

27

through fifth grade. This program of study provides the skills necessary for elementary and

mental agencies, or private not-for-profit agencies that serve students with disabilities or those

nocentrism; (b) knowledge of students' cultural backgrounds as well as their cognitive and learning abilities; (c) understanding of the broader social, economic and political context; (d) ability and willingness to use culturally appropriate, positive behavior management strategies; (e) commitment to building caring classrooms that are intentionally inviting and inclusive; (f) understanding and use of

Credit Hours

INSTRUCTIONAL TECHNOLOGY 27

for receipt of a T-6 (Ed.S.) and a T-7 (Ed.D.) certificate.

edge, skills, and dispositions equipping them to teach technology applications; demonstrate effective use of technology to support student learning of content; and provide professional

through the review of published literature in the field and the participation in professional

Instructional Technology Core 15

- ITEC 8400 Instructional Design and Technology
- ITEC 8410 Technology, Professional Learning, and Change
- ITEC 8420 Evaluating K-12 Instructional Technologies
- ITEC 8430 Technology and Student Assessment
- ITEC 8440 Planning and Implementing Instructional Technology Programs

Instructional Technology Electives (Select 12 hours from the following) 12

- ITEC 9400 Research and Theory in Instructional/Educational Technology
- ITEC 9410 Instructional Leadership and Technology Facilitation
- ITEC 9420 Evaluating Professional Learning and Technology Implementation
- ITEC 9430 Designing and Facilitating Online Learning
- ITEC 9300 Critical Issues for Student Learning: (Topic)
- ITEC 9350 Doctoral Directed Study

Dissertation (Minimum 9 hours) 9

ITEC 9900 Dissertation

as a stand alone degree. Candidates for the Ed.S. must complete 18 hours of the Common Core and 15 hours in the Concentration. If accepted to the program, candidates may request up to 9

initial course in applied research methods. However, final decisions about the acceptability of

Credit Hours

Ed.S. Common Core in Distributed Leadership for Learning 18

building networks of influence and working across boundaries. Candidates are introduced to

standing of and proficiency in a variety of distributed leadership roles and demonstrate their

EDL 8000 Foundations of Leadership for Leary 8E DL M

Adolescent Education Teaching Fields or Tracks (6 hours)

6

English/Language Arts

- ENED 8310 Applied Theory and Research in Writing
 ENED 8701 Applied Theory and Research in Literature

Mathematics (Select two from the following)

MATH 7713 Statistics & Data Analysis

MATH 7718 Functions & Analytic Techniques
 MATH 7900 Special Topics
 MATH 795 Directed Study

MAED 7719 Technology & Mathematics

MAED 7900 Special Topics
 MAED 7950 Directed Study
 MAED 8900 Research Methods & Critique in Mathematics Education

EARLY CHILDHOOD AND ELEMENTARY EDUCATION (15 HOURS)

15

- ECE 8100 Philosophical and Ethical Foundations for Teacher Leaders
 ECE 8120 Critical Analysis of Instruction and Learning
 ECE 8140 Current Critical Issues in Elementary Education
 ECE 8160 Assessment of and for Learning
 ECE 8150 Technology Enriched Curriculum

Inclusive Education (15 hours)

- INED 8325 Creating Culturally Responsive Schools
 INED 8305 Critical Issues in Administering Special Education Programs
 INED 8310 Inclusive Policies & Practices in Special Education
 INED 8315 Supervision, Mentoring and Collegial Coaching in Special Education
 INED 8320 Special Education Administrative Internship

Instructional Technology (15 hours)

- ITEC 8400 Instructional Design and Technology
 ITEC 8410 Technology, Professional Learning & Change
 ITEC 8420 Evaluating K-12 Technologies
 ITEC 8430 Technology and Student Assessment
 ITEC 8440 Planning & Implementing Instructional Technology Programs

Master of Arts in Teaching (MAT)

Office: KH 3024

Phone: (770) 420-6043

Fax: (770) 499-3659

Email: aobrie13@kennesaw.edu

leads to initial certification of well-qualified

4. successful completion of all field experiences; and

Portfolio

professional and reflective analysis of the inte

Transfer Credit

Credit Hours

Summer I - The Learner

12

M.Ed. in Adolescent Education

Office: KH 1005

Phone: (678) 797-2060

Fax: (770) 420-4334

teachers who are already certified will focus

Portfolio

a systematic, reflection-in-action approach to

reflective analysis of the integration of courses

M.Ed. in Early Childhood Education

Office: KH 2311

Phone: (770) 499-3570

Fax: (770) 420-4346

The Master of Education in Early Childhood Education meets the Georgia Professional Standards Commission standards for the degree and is fully accredited by the National Council of Accreditation of Teacher Education (NCATE).

6 a Georgia Teaching Certificate in Early

certificate is not appropriate for admission

8 must be employed M

First Phase: Integrated Instructional Inquiry

(Total 9 semester hours)

1st Semester

The first semester is designed as a time of instructional inquiry. As candidates develop new

Credit Hours

First Phase: Integrated Instructional Inquiry	9
ECE 7511 Inquiry: Educational Research and Prospectus	3

The Montessori Early Childhood Education 2.5-6 year level concentration provides candidates with instruction, modeling and mentoring experiences through which they will acquire the knowledge, skills, and dispositions required to work successfully with young children. This concentration prepares candidates to offer children many more opportunities for self-development, within an enriched, scientifically designed prepared learning environment. Upon completion of the extensive and engaging field work

M.Ed. in Educational Leadership

Office: KH 3123

Phone: (770) 423-6928

Fax: (770) 423-6910

The Master of Education in Educational Leadership meets the Georgia Professional standards Commission standards for the degree and is fully accredited by the National Council of Accreditation of Teacher Education (NCATE).

M.Ed. in Educational Leadership

are met by the specified deadline. Admission

Credit Hours

Ethics & Multicultural Leadership Concentration 36

Semester I:
EDL 7100

and achievement. It is designed for participants who have a T-4 Teaching Certificate. This program requires candidates complete 36 hours of specialized course work taught by full-time graduate faculty and

M.Ed. in Inclusive Education

E-portfolio

Degree Requirements

1. completion of a minimum of 36 hours of approved graduate course work; a systematic, reflection-in action approach
- hours of the minimum 36 hours in full standing at Kennesaw State University;
3. an earned cumulative grade-point average of 3.0; professional practice and reflective analysis
- coursework toward this degree;
4. successful completion of INED 7790 and course (INED 7790) to support development candidate's final semester of study.

The Master of Education in Inclusive Education, with a concentration in Individualized General Curriculum (special education) meets the Georgia Professional Standards Commission (GAPSC) standards for certification of Individualized General Education Program and endorsement in the content



TESOL concentration

The Master of Education in Inclusive Education, with a concentration in TESOL (Teachers of English to Speakers of Other Languages) meets the Georgia Professional Standards Commission (GAPSC) standards for the degree and is part of KSU's teacher education unit fully accredited by the National Council for Accreditation of Teacher Education (NCATE).

laborative model that reflects the needs of teachers to serve English language learners in P-12

the instructional needs of diverse students and highlights specific practices to foster language

is designed to allow certified teachers to:

- Renew a teaching certificate,
- Obtain a Georgia teaching certificate based on a teaching certificate from another state in

- Add a teaching field to an existing certificate,
- Add an endorsement or an add-on to an existing certificate.

certification or the M.Ed. degree. Qualified

the certification requirements of the Georgia

tion must consult with the Office of Graduate

specific admission requirements.

Classification as a non-degree student

1. Earn initial teacher certification. (Note that a certification from Kennesaw State Univer

Georgia teaching certification should contact

ter and summer term GPAs of 3.0 for graduate and 2.0 undergraduate while on academic probation; or 3) earning any combination of three grades

their cumulative GPA to at least 3.0 graduate

Students seeking add-on certification or renewing an expired or out-of-state certificate

Academic Exclusion

least 3.0 graduate and 2.0 undergraduate

work following academic probation; or

The Add-On Certification Program is composed of six three credit hour courses; two one-hour practicum courses; and one portfolio course.

		Credit Hours
Semester I		
EDL 7705	Current Issues in Educational Leadership	3
EDL 7710	Instructional Leadership	3
EDL 7780	Practicum I	1
Semester II		
EDL 7715	Curriculum Leadership	3
EDL 7720	Personnel & Staff Development	3
EDL 7781	Practicum II	1
Semester III		
EDL 7725	Organizational & Financial Resources	3
EDL 7730	Educational Policy and Legal Perspectives	3
EDL 7799	Portfolio Development	1

PROGRAM TOTAL: 21

Applicants for the add-on programs must be fully certified teachers in the State of Georgia

provide verification of field experience availability within their school system, verification of a

Education (ESOL)

The ESOL add-on program prepares certified teachers to teach in ESOL classrooms and to work

PROFESSIONAL SEQUENCE

INED 7705	Inclusive Education Procedures	3
INED 7715	Nature/ Needs: Students with Mild Disabilities	3
INED 7720	Classroom Behavioral Strategies	3
INED 7730	Assessment of Diverse Learners	3
INED 7760	Curriculum Development for Diverse Learners	3
EDRD 7718	Using Instructional Strategies in the Content Area	3
INED 7705	Special Education Procedures	3
INED 7741	Educational Research	3
EDRD 7715	Theory and Pedagogy in the Study of Reading	3
INED 7770	Psychoneurological and Medical Issues in Special Education	3
INED 7780	Collaborative Practices	3
INED 7715	Nature & Needs of Students with Disabilities	3
EDRD 7717	Reading Assessment & Instruction	3
INED 7970	Internship	2
INED 7790	Documenting Professional Growth	1

PROGRAM TOTAL: 36

Preschool/Special Education

		Credit Hours
EXC 7746	Models of Development and Procedures For Assessment	3
EXC 7747	Developmentally Appropriate Practices for Curricular	3
EXC 7748	Language Learning & Emergent Literacy	3

PROGRAM TOTAL: 9

Reading

cess, linking assessment and instruction, and using instructional strategies in specific content

Successful completion of the following three courses certifies teachers in reading at the grade-level(s) of their current teaching certificates. The program presupposes certification at least at

		Credit Hours
EDRD 7715	Theory and Pedagogy in the Study of Reading	3
EDRD 7717	Reading Assessment and Instruction	3
EDRD 7718	Content Area Reading	3

PROGRAM TOTAL: 9

Teacher Support Specialist

The Teacher Support Specialist endorsement prepares certified teachers to supervise student

		Credit Hours
EDUC 7771	Teacher Support Specialist	3
EDUC 7772	Internship for Teacher Support Specialist	3
PROGRAM TOTAL:		6

Graduate and Post Graduate Education Course Descriptions

paradigm; and examined as a process of purpose
autonomous, reflective, self-directed teacher

Adolescent Education (EDAD)

EDAD 8100. Curriculum Theory & Practice in Middle & Secondary Schools. 3-0-3.

Prerequisite: Admission to Ed.S./Ed.D. program.

EDAD 8300. Critical Analysis & Educational Policy for Teacher Leaders. 3-0-3.

Prerequisite: Admission to Ed.S. or Ed.D. program.

foundations of curriculum; and curriculum

EDAD 8200. Supervision, Mentoring, and Advocacy in Middle and Secondary Schools. 3-0-3.

Prerequisite: Admission to Ed.S. or Ed.D. program.

This course focuses on specific instructional

Early Childhood Education (ECE)

ECE 7511. Inquiry: Educational Research and Prospectus. 3-0-3.

Prerequisite: Admission to M.Ed. program.

Research internships focus on the identification,

ECE 7512. Inquiry: Best Instructional and Curricular Practices & Multiple Assessment Strategies. 3-0-3.

Prerequisite: Admission to M.Ed. program.

EDAD 9300. Critical Issues for Student Learning: (Topic) (3-0-3 repeatable).

Prerequisite: Admission to Ed.S. or Ed.D. program and permission of the advisor.

ences on Achievement. 3-0-3.

Prerequisite: Admission to M.Ed. program and completion of first phase.

EDAD 9350. Doctoral Directed Study. (1-9 hours, repeatable).

Prerequisite: Admission to Ed.D. program and permission of the advisor.

ECE 7514. Inquiry: Essentials of Technology Strategies and Skills & Introduction to E-portfolio. 3-0-3.

Prerequisite: Admission to M.Ed. program completion of the first phase.

EDAD 9900 Dissertation (1-9 hours, repeatable)

Prerequisite: Admission to Ed.S. or Ed.D. program and 12 hours of graduate level research courses.

ECE 7530. Integrated Models of Instruction II. 3-0-3.

Prerequisite: Admission to M.Ed. program and completion of the first phase.

ECE 7551. Portfolio Completion. 3-0-3.
Prerequisite: Admission to M.Ed. program and completion of the second phase.

ECE 7531. Research and Implementation in Classroom I. 3-0-3.
Prerequisite: Admission to M.Ed. program and completion of the first phase.

ECE 7560. Accomplished Instructional Leader. 3-0-3.
Prerequisite: Admission to M.Ed. program and completion of the second phase.

ECE 7540. Integrated Models of Instruction II. 3-0-3.
Prerequisite: Admission to M.Ed. program and completion of the first phase.

modifications and accommodations for all students

ECE 7541. Research and Implementation in Classroom II. 3-0-3.
Prerequisite: Admission to M.Ed. program and completion of first phase.

ECE 7542. Multimedia Presentation and E-portfolio Development Skills. 3-0-3.
Prerequisite: Admission to M.Ed. program and completion of first phase.

ECE 7550. Prospectus Completion. 3-0-3.
Prerequisite: Admission to M.Ed. program and completion of the second phase.

current relevance and influence on schools and

ECE 7703. Families and Schools in a Pluralistic Society. 3-0-3.

Prerequisite: Admission to graduate study in education.

ECE 7704. Trends and Issues in Language Arts for Early Childhood. 3-0-3.

Prerequisite: Admission to M.Ed. in Elementary and Early Childhood Education and EDUC 7741.



134 Master of Education Programs

ECE 8140. Current Critical Issues in Elementary Education. 3-0-3.

Prerequisite: Admission to the Ed.D. program

This course will focus on the identification

Action Research. 3-0-3.

Pre-requisites: EDUC 6200.

Deals with the development of field-based action

the development of the reflective practitioner.

EDUC 6400. Capstone Seminar. 3-0-3.

Prerequisites: EDUC 6300.

dates reflect on and document their expertise as

expertise in a focused area of their teaching field

Prerequisite: Admission to M.Ed. program.

construction. Deals with proposed field-based

organizations, legal issues, political influences, and other contemporary issues influencing education.

EDUC 7702. Best Practices in Secondary Schools. 3-0-3.

Prerequisite: Admission to graduate study in education.

EDUC 7703. Advanced Studies of Middle Grades Learner. 3-0-3.

Prerequisite: Admission to graduate study in education.

application of these approaches in the field setting

EDUC 7705. Advanced Studies of Middle Grades Learner. 3-0-3.

Prerequisite: Admission to graduate study in education.

tional and af iif

for influencing teacher and student motivation.

EDUC 7711. Integrating Technology in Education. 3-0-3.

Prerequisite: Admission to M.Ed. program.

EDUC 7716. Reading in the Elementary School. 3-0-3.

Prerequisite: Admission to graduate study in education.

EDUC 7771. Teacher Support Specialist. 3-0-3.

Prerequisite: Admission to M.Ed. program.

EDUC 7980. Practicum (repeatable). 0-3-3. (Regular grades)

Prerequisite: Admission to graduate study in education and permission of director; Office of Educational Field Experiences and director, graduate study in education.

A supervised field placement for the purpose of

EDUC 7772. Internship in Teacher Support Specialist. 3-0-3.

Prerequisite: Admission to M.Ed. or MAT program.

placement is required prior to field experience placement.

placement is required prior to field experience placement.

placement is required prior to field experience placement.

EDUC 7797. The Portfolio. 3-0-3.

Prerequisite: Permission of the committee chair.

EDUC 8100. Advanced Study of Learning. 3-0-3.

Prerequisite: Admission to Ed.D. program.

ment a systematic, reflection-in-action approach

EDUC 8300 Intercultural Communication and Global Learning. 3-0-3.

Prerequisite: Admission to Ed.S. program or permission of instructor.

the candidate's professional practice and reflection

EDUC 7900. Special Topics (repeatable). 1-9. (Regular grades)

Prerequisite: Admission to graduate study in education and permission of advisor, instructor, department chair, and director, graduate study in education.

Exploration of a specifically designed topic or theme

EDUC 7950. Directed Study (repeatable). 1-9 (Regular grades).

Prerequisite: Admission to graduate study in education and permission of advisor, instructor, department chair, and director, graduate study in education.

EDUC 9300. Critical Issues for Student Learning: (Topic) (3-0-3 repeatable)
Prerequisite: Admission to Ed.S. or Ed.D. program and permission of the advisor.

EDUC 9350. Doctoral Directed Study. (1-9 hours, repeatable).
Prerequisite: Admission to the Ed.D. program and permission of the advisor.

EDUC 9900. Dissertation. (1-9 repeatable)
Prerequisite: Admission to Ed.D. program and 12 hours of graduate level research courses.

Educational Leadership (EDL)

EDL 7100. Leadership Theory and Practice. 3-0-3.
Prerequisite: : Admission to M. Ed. program or permission of instructor.

both generally and specifically in the context of

EDL 7105. Technology Leadership and Vision in Schools. 3-0-3.
Prerequisite: : Admission to M. Ed. program or permission of instructor.

leaders explore the essential conditions—including a local vision for technology use—that teach

of these essential conditions in their own schools; identify local school technology needs; and form

EDL 7200. Leading Curriculum, Instruction and Assessment. 3-0-3.
Prerequisite: : Admission to M. Ed. program or permission of instructor.

programs; align instruction vertically and horizontally; monitor and evaluate the implementation systemically; and effectively improve curriculum

EDL 7205. Leading Teaching and Learning in the 21st Century. 3-0-3.
Prerequisite: : Admission to M. Ed. program or permission of instructor.

142 Master of Education Programs

EDL 7610. Managing and Supporting
Technology in Schools. 3-0-3.

Prerequisite: : Admission to M. Ed. program or
permission of instructor.

student learning and increase the efficiency of

EDL 7740. Multicultural and International Education. 3-0-3.

Prerequisite: Admission to M. Ed. program in Educational Leadership or graduate Educational Leadership Add-On Certification program

EDL 7765. Productivity & Professional Practice for Leaders. 3-0-3.

Prerequisite: Admission to M.Ed. program in Educational Leadership or graduate Educational Leadership certification program

EDL 7750. Educational Research. 3-0-3.

Prerequisite: Admission to M. Ed. program in Educational Leadership or graduate Educational Leadership Add-On Certification program

EDL 7755. Technology Leadership in Education. 3-0-3.

Prerequisite: Admission to M.Ed. program in Educational Leadership or graduate Educational Leadership certification program

ch ando18(ch ando18(ch ando18(go18(yc)63 h)63Sh)

Leadership certification program

administrators; technology planning (national

school technology plan); assessment and evaluation of technology initiatives; the change process as it applies to technology leadership; securing

relevant to the field of educational technology.

EDL 7760. 21st Century Teaching & Learning. 3-0-3.

Prerequisite: Admission to M.Ed. program in Educational Leadership or graduate Educational Leadership certification program

EDL 9900. Dissertation. (1-9 hours, repeatable)

Prerequisite: Admission to Ed.D. program, 12 hours of graduate level research course, and permission of the advisor.

cal software, interpret their findings, and commu

Inclusive Education (INED)

INED 7705. Inclusive Education Procedures. 3-0-3.

Prerequisite: Admission to M.Ed. program in Inclusive Education or graduate inclusive education add-on program.

Educational Research (EDRS)

EDRS 8000. Applied Quantitative & Qualitative Research. 3-0-3.

Prerequisite: Admission to Ed.S. or Ed.D. program or permission of instructor.

are served from the first risk factors (pre-referral)

EDRS 8900. Applied Field Research. 3-0-3.

Prerequisite: 6 hours of graduate research courses. Student will complete a field research project in

INED 7715. Nature/Needs: Students with Mild Disabilities. 2-3-3.

Prerequisite: Admission to M.Ed. program in Inclusive Education or graduate inclusive education add-on program.

EDRS 9100. Advanced Qualitative Research Methods. 3-0-3.

Prerequisite: Admission to the Ed.D. program.

Clinical applications in a field site are included.

EDRS 9200. Advanced Quantitative Research Methods. 3-0-3.

Prerequisite: Admission to the Ed.D. program.

course also discusses family and cultural inf u

INED 7725. Education of Students with Severe Disabilities. 2-3-3.

Prerequisite: Admission to M.Ed. program in Inclusive Education or graduate inclusive education add-on program. INED 7715 and INED 7740.

is required prior to field experience placement.

INED 7730. Assessment of Diverse Learners. 3-0-3.

Prerequisite: Admission to M.Ed. program or graduate add-on program.

INED 7746. Models of Development and Procedures for Assessment. 3-0-3.

Prerequisite: Admission to Preschool/Inclusive Education Add-on Program.

INED 7980. MAT TESOL Practicum.

0-3-3. (Regular grades).

Prerequisite: Admission to MAT TESOL program, INED 7784.



Instructional Technology (ITEC)

ITEC 8400. Instructional Design and

is required prior to field experience placement.

EDRD 8360. Literacy Instruction for English Language Learners. 3-0-3.

Prerequisite: Admission to the Inclusive Education graduate program.

Specific issues include (but are not restricted to) first and second language acquisition, knowledge of proficiency levels, linguistic and phonemic awareness, phonics instruction, fluency, com-

EDRD 8365. Literacy Instruction for Students with Disabilities. 3-0-3.

Prerequisite: Admission to the Inclusive Education/ESOL Ed.D. program.

comprehension. Specific issues include (but are not restricted to) phonemic awareness, phonics instruction, flu-

ANTH 7950. Directed Study (repeatable). 1-9. (Regular grades).

Prerequisite: Admission to graduate study in education and permission of advisor, instructor, department chair, and director, graduate study in education.

Art Education (ARED)

ARED 6200. Curriculum, Assessment, Classroom Management in Art. 3-0-3.

Prerequisite: Admission to the MAT program.

ARED 6200L. Art Education Practicum II. 0-9-3.

Prerequisite: EDUC 6100L, ARED 6200.

This field experience is designed to provide

and reflect on concepts addressed in the pre-

the field. Candidates must have a satisfactory

tion program without remediation. Verification

ARED 6250. Materials, Methods, & Management for Art Education Classrooms P-5. 3-0-3.

Prerequisite: ARED 6200L and ARED 7705.

Specific strategies focus on differentiating

aspects relevant to best practices in the field of

Teaching Field Courses

Anthropology (ANTH)

ANTH 7900. Special Topics (repeatable). 1-9. (Regular grades).

Prerequisite: Admission to graduate study in education and permission of advisor, instructor, department chair, and director, graduate study in education.

ARED 6251. Materials, Methods, & Management in Art Education 6-12. 3-0-3.

Prerequisite: ARED 6200L and ARED 7705.

Specific strategies focus on differentiating

aspects relevant to best practices in the field of



Chemistry (CHEM)

CHEM 5010. Medicinal Chemistry. 3-03.

Prerequisite: Graduate level standing or permission of the instructor.

pounds, ligand field theory and other topics.

CHEM 6310. Advanced Topics in Analytical Chemistry. 3-03.

Prerequisite: Grade of C or better in CHEM CHEM 3602.

CHEM 5400. The Teaching and Learning of Chemistry. 3-03.

Prerequisite: Grade of C or better in CHEM 1212 and 1212L.

Compounds. 3-03.

Prerequisite: Grade of C or better in CHEM 3362.

CHEM 5700. Environmental Chemistry. 3-03.

Prerequisite: Grade of C or better in CHEM 3361.

CHEM 6430. Advanced Topics in Organic Chemistry. 3-03.

Prerequisite: Grade of C or better in CHEM 3362. Advanced topics in organic chemistry as may fit

CHEM 6440. Polymer Chemistry. 3-0-3.

Prerequisite: Grade of C or better in CHEM 3362.

CHEM 6510. Advanced Topics in Biochemistry. 3-0-3.

Prerequisite: Grade of C or better in CHEM 3501.

CHEM 5800. Forensic Analytical Chemistry. 3-03.

Prerequisite: Grade of C or better in CHEM 2800 and CHEM 3362.

CHEM 6620. Advanced Topics in Physical Chemistry. 3-0-3.

Prerequisite: Grade of C or better in CHEM 3602.

CHEM 7950. Directed Study (repeatable). 1-9. (Regular grades)

Prerequisite: Admission to graduate study in education and permission of advisor, instructor, department chair, and director, graduate study in education.

CHEM 6110. Advanced Topics in Inorganic Chemistry. 3-03.

Prerequisite: Grade of C or better in CHEM CHEM 3100 and CHEM 3602.

English (ENGL)

ENGL 7701. Topics in Literature. 3-0-3.

ENGL 7900. Special Topics (repeatable). 3-0-3. (Regular grades)
Prerequisite: Admission to graduate study in education and permission of advisor, instructor, department chair, and director, graduate study in education.
 Exploration of a specifically designed topic in an

ENGL 7950. Directed Study (repeatable). 3-0-3. (Regular grades)
Prerequisite: Admission to graduate study in education and permission of advisor, instructor, department chair, and director, graduate study in education.

English Education (ENED)

ENED 6414. Teaching Secondary English I. 2-3-3.
Pre-requisites: EDUC 6100 and EDUC 6100L.
Recommended Corequisites: ENED 6414 and EDUC 6414L.

today. Includes a secondary school field experience

ENED 6414L. Practicum II. 0-9-3.
Prerequisite: EDUC 6100 and EDUC 6100L.
Corequisite: ENED 6414.
 This field experience is designed to provide the
 reflect on concepts addressed in the corequisite

mately nine hours per week in the field. Can
 tion. A Criminal Background Check and Verifica

ENED 6475. Teaching Secondary English II. 2-3-3.
Prerequisites: EDUC 6251. **Corequisite:** EDUC 6300 and 6300L.

classrooms. Includes a secondary school field

ENED 6475L. Practicum III. 0-18-6.
Prerequisites: ENED 6414 & ENED 6414L.
Corequisite: ENED 6475.
 This field experience is designed to provide the
 reflect on concepts addressed in the corequisite

mately nine hours per week in the field. Can
 tion. A Criminal Background Check and Verifica

ENED 8310 Applied Theory and Research in Writing. 3-0-3.
Prerequisite: Admission to the Ed.D. in Adolescent Education—English program and permission of the English Education Ed.D. advisor.

seminal and current research in the field of

designs; seminal studies in the fields of writing
 writing instruction as reflected in the research;

language, curricular development in the field of

ENED 9900. Dissertation.
(1-9 May be repeated)

**Prerequisite: Admission to Ed.D. program and
12 hours of graduate level research courses.**

Foreign Language Education (FLED)

FLED 7703. Research in Second Lan-
guage Acquisition. 3-0-3.

**Prerequisite: Admission to the MAT program
(Foreign Languages).**

Geography (GEOG)

GEOG 7701. Peoples of the World. 3-0-3.

Prerequisite: Admission to graduate study in education.

GEOG 7900. Special Topics
(repeatable). 1-9. (Regular grades)

Prerequisite: Admission to graduate study in education and permission of advisor, instructor,

Mathematics (MATH)

MATH 7700. Elementary Set Theory. 3-0-3.

Prerequisite: Admission to the graduate college.

MATH 7712. Discrete Mathematics. 3-0-3.

Prerequisite: Admission to graduate study in education.

hcd|Wg W UgÚb|H[fUd\gza Uf|WgzfYWfgcbz
Wí bh|b[ždfcVUM]]hāUbX'a cXi `U'U]h a YHw=đ
|gXYg| bYX'c fYŪMMWffYbhfYwa a YbXU|cbg'

MATH 7713. Statistics and Data Analysis. 3-0-3.

Prerequisite: Admission to graduate study in education.

UbXXUHUbUng|g'c j U]ci gŪYXgg W UgYXi W
hcbzgVbWZUbX'Vi glbYgg'H'fci [\ h Yi gYcZ
j U]ci ghYWbc'c[]YgUgXUHUbUng|g'c'gžh Y
gi XYb|gk]''g'j YdfcV'Ya gi glb| XYG|dhj Y
UbX|bZfYb|U gUhg|WZUgk Y`UgUdd'mU[Y
VUjWbWb|ei YgZf'UbUmm|b| XUH'

MATH 7714. Geometry from Multiple Perspectives. 3-0-3.

Prerequisite: Admission to graduate study in education.

UbX'fUbgZ'fa U|cbU' [Yca YfmiH'ed|W|bW XY

dfccZdfcdcfhcbU'fYUgcb|b[žgdUH'j]g U]nU
hcbzUbXU |ca U|Wng'há g"5 b |bj Yg| U|j Y
UddfcUW YbWi fU Yggh XYb|g'c Wb'Wm fZhgž
UbXj Yf|Zn[Yca Yf|Wf|bVd Yg'



SCI 7950. Directed Study (repeatable).
1-9. (Regular grades).

Prerequisite: Admission to graduate study in education and permission of advisor, instructor, department chair, and director, graduate study in education.

168 Graduate and Post Graduate Education Course Descriptions

Requires weekly field experiences. Course

SPAN 7722. Literary Masterpieces.
3-0-3.

**Prerequisite: Admission to the MAT program
(Foreign Languages).**

define (or defy) the aesthetic and cultural canon
of the period. Requires weekly field experiences.

SPAN 7724. Topics in Literature. 3-0-3.

Prerequisite: SPAN 7722.

are chosen for their significance and impact on

Applied Exercise and Health Science

Master of Science with a Major in
Applied Exercise and Health Science

Office: CC 3014

Phone: (770) 423-6216

Fax: (770) 423-6561

Program Description

Applied Exer

170 Master of Science in Applied Exercise and Health Science

considered for admission with evidence of foundational coursework in community/personal health, exercise physiology,



EHS 6655. Epidemiology. 3-0-3.

Prerequisite: Graduate status.

This course focuses on the basic epidemiological

tion of human and environmental factors that

include the study of human disease determinants and distribution, strategies for health

logical principles in developing health promotion interventions.

EHS 6665. Health Promotion Programming and Evaluation. 3-0-3.

Prerequisite: Graduate status and EHS 6620.

and processes that are critical to the planning, implementation, and evaluation of health promotion programs specific to a variety of settings.

is aligned with the National Commission for Health Education Credentialing Competency-Based Framework for

Information Systems

Contact Information for the Master of Science in Information Systems (MSIS)

Fax: (770) 423-6731

MSIS Program Description

(MSIS) program is a 36 semester-hour applied

elective courses: e-Business Systems, Informa-

General Requirements for Admission to the MSIS Program

- Baccalaureate degree from an institu-
- Minimum cumulative undergraduate adjusted grade-point average of 2.75 on a 4.0 scale.
- Successful completion of required undergraduate course work (or fulfillment of preparatory work experience and/or certification).
- Minimum score of 500 on the Graduate Management Admission Test (GMAT) with a minimum score of 30 in the verbal category, 30 in the quantitative category and 3.0 in the analytical writing category.
- Minimum score of 400 in the verbal and 400 in the quantitative categories and 3.0 in the analytical writing category on the General Test of the Graduate Record Examination (GRE). (Applicants

- Other criteria will be considered by the MSIS

-

-GPA attained in junior/senior level course work; certificates of attainment in computing-related training/self-study programs;
-accomplishment in professional activities;
-relevant work experience.

- A current résumé.
- A Statement of

requirements. See Graduate Admission section

Non-Degree Admission

not admit students as non-degree, nor are non-degree students

Transfer Credit

A student may transfer up to six (6)

Credit Hours

CORE REQUIREMENTS 24

The Informatics course must be completed in the student's first semester of coursework. The IS Policy and Strategy course should be completed in the student's final semester of work.

IS 8005	Informatics (Must be completed in student's first semester in MSIS)	3
IS 8020	Object-Oriented Software Dev. Methods & Technologies	3
IS 8040	Data Communication Theory and Practice	3
IS 8050	Information Systems Project Management Methods	3
IS 8060	Information Systems Dev. Methods and Technologies	3
IS 8070	Legal and Ethical Issues in Information Systems	3
IS 8080	Database Application Design and Implementation	3
IS 8950	Information Systems Policy and Strategy	3
	(Capstone Experience - should be taken in the student's last semester in the MSIS)	

ELECTIVES 12

may select no more than three (3) hours of coursework from outside the department.

IS 8110	Information Security Administration	3
IS 8112	Information Security Technologies	3
IS 8120	Human-Computer Interface and Design	3
IS 8130	Query Languages	3
IS 8622	Network Implementation and Security	3
IS 8625	Advanced Data Communications	3
IS 8628	Internetworking Technologies	3
IS 8722	e-Business Systems Strategy	3
IS 8724	e-Business Technologies	3
IS 8726	e-Business Systems Solutions	3
IS 8822	Information Systems Integration	3
IS 8825	IT Leadership	3
IS 8826	Information Systems Services	3
IS 8900	Special Topics in Information Systems	3
IS 8910	Special Projects in Information Systems	3
IS 8916	Cooperative Study in Information Systems	3
IS 8918	Internship in Information Systems	3

Collaborative Studies Elective: Students may select no more than three (3) hours of coursework

RECOMMENDED AREAS OF INTEREST

I. e-Business Systems

The e-Business speciality area of interest in the Master of Science in Information Systems program solutions. The e-Business area of interest consists of three recommended courses: e-Business Sys-

tems Strategy, e-Business Technologies, and e-Business Systems Solutions. Each course focuses on specific aspects of how organizations are moving from traditional processes and physical products to electronic processes and digitized products. As a whole, the courses flow from analysis of business processes to core e-business technologies to implementation and management of e-business solutions. However, each course includes an overview of the issues organizations encounter as they undertake e-business initiatives. As such, while the area of interest is designed as a sequence,

- IS 8722 e-Business Systems Strategy
- IS 8724 e-Business Technologies
- IS 8726 e-Business Systems Solutions

II. Information Security

work and projects emphasizing the protection of the confidentiality, integrity, and availability

- IS 8110 Information Security Administration
- IS 8112 Technical Aspects of Information Security

- IS 8622 Network Implementation and Security
- IS 8628 Internetworking Technologies
- IS 8724 e-Business Technologies

III. Systems Administration

practices, interoperability issues, and training of end-users.

- IS 8822 Information Systems Administration
- IS 8825 IT Leadership
- IS 8826 Information Systems Services

PROGRAM TOTAL: 36

IS 8130. Query Languages. 3-0-3.

Prerequisite: IS 8080.

This course will provide students with in-depth understanding of SQL from the Oracle perspective. Additional topics will include SQL*Plus and PL/SQL. Objectives for the course will be

IS 8900. Special Topics in Information Systems. 1 to 3.

Prerequisite: Must be approved by graduate program director.

IS 8910. Special Projects in Information Systems. 1 to 3.

Prerequisite: Must be approved by graduate program director.

IS 8916. Cooperative Education. 1 to 3.

Prerequisite: Must be approved by graduate program director.

IS 8918. Internship. 1 to 3.

Prerequisite: Must be approved by graduate program director.

IS 8950. Information Systems Policy and Strategy. 3-0-3.

Prerequisite: IS 8005.

evaluate actual corporate IS strategies in a case-

Nursing

Master of Science in Nursing (MSN)

Office: Nursing 242
 Phone: (770) 423-6172
 Fax: (770) 423-6627
 Email: gdorman@kennesaw.edu
http://www.kennesaw.edu/col_hhs/schoolofnursing/Masters/index.htm

The WellStar Primary Care Nurse Practitioner Program and the MSN in Advanced Care Management and Leadership Program are professional degree programs that build on the background of experienced registered nurses to prepare them to function as advanced caregivers in a variety of leadership roles in the emerging world of collaborative health care.

Housed in the WellStar College of Health and Human Services, the MSN programs maintain close community ties with a variety of health care agencies and providers.

General Requirements for Admission to the MSN Programs

MSN admission requires:

1. Baccalaureate degree

satisfactory GPA of at least 3.0

2. A minimum of three years full-time professional experience as a registered nurse as documented in a professional résumé for the WellStar Primary Care Nurse Practitioner Program applicant or a minimum of one year of M

patient care. Preference will be given to those candidates with a greater amount of professional experience.

3. Current RN licensure in the state of Georgia.
4. A minimum combined total score of 800 in the verbal and quantitative categories and a minimum 35 in the analytical writing category on the General Test of the Graduate Record Examination. Applicants may make a formal written request to waive this requirement only when the applicant has completed another graduate degree program and

1. University institution with a sat

International applicants have additional requirements. See Graduate Admission section of this catalog.

Admission decisions are based on overall evaluation of all these elements.

Transfer Credit

Up to 15 quarter hours or nine semester hours of graduate work from other accredited institutions may be transferred. This work must correspond to the Kennesaw State University MSN curriculum. Decisions regarding this transfer will be made by the program director. The credit to be considered for transfer will not be more than five years old at the time the student enters.

The WellStar Primary Care Nurse Practitioner Program is fully accredited by CCNE, the Commission on Collegiate Nursing Education. This professional degree prepares experienced registered nurses to sit for certification as a family or adult nurse practitioner. The program builds on the background of professional nurses to prepare them to function as primary care givers in the emerging collaborative world of health care.

NURS 8815	Clinical Management of Selected Chronic Health Conditions in Middle-Aged and Older Adults	3	
NURS 8830	Clinical Management of Reproductive Health	2	
RESIDENCY			18
NURS 8850	Primary Care Residency I Prerequisite: NURS 7735 Corequisite: NURS 8800	4	
NURS 8851	Primary Care Residency II Prerequisite: NURS 8850, 8800 Corequisite: NURS 8805 or NURS 8815	4	
NURS 8852	Primary Care Residency III Prerequisite: NURS 8851; 8805 or 8815; Corequisite: NURS 8830, 8853	4	
NURS 8853	Primary Care Residency IV Prerequisite: NURS 8851; Corequisite: NURS 8854, 8852, 8830	4	
NURS 8854	Primary Care Clinical Project Prerequisite: NURS 7746 Corequisite: NURS 8852, 8853	2	

PROGRAM TOTAL: 40

WellStar Primary Care Nurse Practitioner Course Descriptions

NURS 7715. Professional Advanced Role Development and Health Care Issues. 2-0-2.

Prerequisite: Admission to MSN Program.

Within this course, role theory, change theory, and leadership theory as they apply to advanced practice nursing are examined. The issues related to the role of the advanced practice nurse in today's health care environment are explored. Ethical and legal decision-making processes are investigated. The w

NURS 7755. Pharmacology for Advanced Practice Nursing. 2-0-2.

Prerequisite: Admission to MSN Program or permission of the program coordinator.

This course expands the experienced professional nurse's understanding of pharmacological principles, including pharmacokinetics and pharmacodynamics. Emphasis is placed on enhancing the knowledge necessary to improve client care outcomes.

NURS 7765. Pathophysiology for Advanced Practice Nursing. 2-0-2.

Prerequisite: Admission to MSN Program or permission of the program coordinator.

This course is designed to provide the experienced professional nurse with advanced content concerning normal and abnormal human physiologic responses to pertinent pathophysiologic conditions. Emphasis is placed on the clinical manifestations of these conditions may successfully intervene in a variety of advanced practice clinical settings.

NURS 8800. Clinical Management of Selected Common Health Conditions in Adults. 3-0-3.

Prerequisite: NURS 7735. **Corequisite:** NURS 8850.

This course addresses the common health conditions, both simple and complex, affecting individuals, aged 17 and older, frequently encountered in primary care setting. Client's clinical presentation, underlying causes, and appropriate treatment modalities are explored. The nurse practitioner's role in the clinical management of common health conditions in the adult client is the focus with emphasis on referral, follow-up, and client education. The impact of health problems on the family unit is also explored.

NURS 8853. Primary Care Residency
IV. 1-9-4.

Prerequisite: NURS 8851; **Corequisite:** NURS

Nursing Education Leadership

NURS 7792	Curriculum, Instruction & Evaluation in Health Care Organizations	4
NURS 7790	Innovative Teaching and Learning Strategies	2
NURS 8870	Assuming Leadership Role in Education - Practicum I	2
NURS 8871	Assuming Leadership Role in Education - Practicum II	4
NURS 8872	Assuming Leadership Role in Education - Practicum III	4

PROGRAM TOTAL: 40

Advanced Care Management and Leadership Course Descriptions

NURS 7715. Professional Advanced Role Development and Health Care Issues. 2-0-2.

Prerequisite: Admission to MSN Program.

Within this course, role theory, change theory, and leadership theory as they apply to advanced practice nursing are examined. The issues related to the role of the advanced practice nurse in today's health care environment are explored. Ethical and legal decision-making processes are investigated. The standards and regulations governing advanced practice nursing are examined.

NURS 7725. Health Care Theory. 2-0-2.

Prerequisite: Admission to MSN Program or permission of the program coordinator.

Theories from healthcare, nursing and related fields are analyzed and critiqued from the perspective of theory development and theory utilization. Theoretical concepts are considered

in the context of advanced practice nursing. Theories are applied to the practice setting.

concerning normal and abnormal human physi

Professional Writing

Master of Arts in Professional Writing (MAPW) Contact Information

www.yu.edu/professionalwriting

Phone: 716.644.2200
Email: profwriting@yu.edu

MAPW Program Description

The MAPW program is designed to provide students with the skills and knowledge necessary to succeed in a variety of professional writing careers. The program includes courses in business writing, technical writing, and creative writing.

General Requirements for Admissions to the MAPW Program

Students must have completed at least 12 credits of college-level writing courses.

Students must have a minimum GPA of 3.0.

Students must have completed at least one semester of college-level writing courses.

&"5'a]b]a i a 'lchU'gWfY'cZ, SSfj YVU'UbX'
ei Ubj]Hj] YLubXUa]b]a i a ") flbUnh]W
k f]j]b[Ecb h'Y; YbYU'Hg]cZh'Y; fUXi !
UyFYWfX9l Ua]b]hcb]f F9E'H'Y; F9'



PRWR 6240. Technical Writing. 3-0-3.
Prerequisite: Admission to the MAPW program
or permission of the MAPW program director.

PRWR 6300. Understanding Writing as
Process. 3-0-3.
Prerequisite: Admission to the MAPW program
or permission of the graduate program director.

PRWR 6260. Managing Writing in
Organizations. 3-0-3.
Prerequisite: Admission to the MAPW program
or permission of the graduate program director.

PRWR 6410. Feature Writing. 3-0-3.
Prerequisite: Admission to the MAPW program
or permission of the graduate program director.

Vi g|bYgYz|bcdbfcÚhcf[Ub)nU|cbgZUbX[cj Yfb!

PRWR 6440. Professional and
Academic Editing. 3-0-3.
Prerequisite: Admission to the MAPW program
or permission of the graduate program director.

! h|cbg|b h Y|f fYU!k cf XWbMlg"BY lZgh XYblg'

UWXYa |Wf|UXZdfcZgg|cbUzYXi W|cbUz
UbXgWc fFnLYX|h|b| Zf a U| Uh|bYgZ'ci fbUgZ'

PRWR 6460. Fiction Writing. 3-0-3.
Prerequisite: Admission to the MAPW program
or permission of the graduate program director.
K cf_g|cd W|f gY|b h Yk f|h|b['cZU|cb"

Ga U`|[fci dW|h|ei YZcbY!|c!cbYWbZfYbWg'

PRWR 6470. Poetry Writing. 3-0-3.
Prerequisite: Admission to the MAPW program
or permission of the graduate program director.

! |a Yb|U Zfa gVma YUbgZga U`|[fci dW|h|ei YZ
cbY!|c!cbYWbZfYbWgUbXdYf'fY |g|cb"

PRWR 6480. Play Writing. 3-0-3.
Prerequisite: Admission to the MAPW program
or permission of the graduate program director.

! Xi W|cb|cZcbY!UWUbXa i 'h|UW|fUa U|Wk cf_g'

PRWR 6750. Teaching Writing to Speakers of Other Languages. 3-0-3.

Prerequisite: Admission to the MAPW program or permission of the graduate program director.

hUW]b['k f]Hb['r '9G@k f]Hf g"9a d\Ujgk]''

k f]Hb['g.]`gUbX9G@Wa dclHcb HfWb]ei Yg' UbXdf]bMd`YgZf j U]ci g9G@k f]Hb['gh U]cbg'

PRWR 6760. World Englishes. 3-0-3.

Prerequisite: Admission to the MAPW program, or permission of the graduate program director.

PRWR 6800. Careers in the Literary Arts. 3-0-3.

Prerequisite: Admission to the MAPW program or permission of the graduate program director.

H\YUfgi\UZcZh YWi fgYk]``g fj YniWa dc! bYblgh Uha U_Yi d h Y]HfUhi fYUYX'UbX']blfc!

``]blf

PRWR 6860. Intercultural Communication in Context. 3-0-3.

Prerequisite: Admission to the MAPW program, or permission of the graduate program director.

!

!

WYUYYt gh XnUgdWjUWmYcZk f]Hb Wa !
a i b]Wjcb]b UgdWjUWY]cb'cf'fY]cbgcZk Y

PRWR 7500. Advanced Creative Writing. 3-0-3.

Prerequisite: Admission to the MAPW program, or permission of the graduate program director, 6000-level creative writing course in the appropriate genre, and permission of instructor.

5Xj UbWX'k cf_g\cd W'i fgY]b Y]h Yf'UW]cbz

+ "5 gHhã YbhcZdi fdcgYhUhi| a

Creative Writing

CZŪW:· fH+SŁ(--!'')
: U · fH+SŁ(&!*) &

Admission Requirements

! |b[ūdd'jWjcb'lc hY; fUXi UY7YfjŪWjY

&"5 b ūdd'jWjcbZY

' "CZŪW·

("CZŪW [fUXi UYhfUbgWdhz|ZŪdd'jWjY

)"5'a |b|a i a i bXf| fUXi UY| fUXYdc|bhjY f!

U YcZ& 'cbU("SgWYcfUa |b|a i a ' fUXi !

UY| fUXYdc|bhjY YfU YcZ "S'cbU("SgWY

*"=a a i b|nUjcb'fYei |fYa YbhfgYY; fUXi UY

5Xa jggcb'gWjcb'cZWUc|L



Ug'h Y5 "@6i ffi gg=bg]hi h'cZDi V]WGYfj]W
hUhdfcj]XYgW'a a i b]mgfj]WgUbX'hWb]

; Yef[]U' S%(!)- %
CZÚW: fh+SE(&!**' %
: U.: fh+SE(&!*' %&
Ya U): a [f]ZÚh4_YbbYgUk "YXi
 \hd.##k k k "_YbbYgUk "YXi #dc'g#a dU

Master of Public Administration

H YA Ug'h cZDi V]W5 Xa]b]gU]cb fA D5 E

k]h Ub YhcgcZ Ugk Y''

CONCENTRATIONS

H YWbWbfUjcb Wi fgYgYbUVYgi Xyblg'rc dfYdUFYh Ya gyj YgZcf' dfcZggjcbU WfYf'g]b h Y di V]WbX'cbdbfcUhgYm'f'G'i Xyblgk]''WccgY'cbYcZh YZc''ck]b['WbWbUjcbg'

FYeI]fYX

D5 8 '+%SS'' D\] 'Ubh fcdmUbX'h YB cdbfcU'hiGYm'f' D\] 'Ubh fcdmUbX'h YB cdbfcU'hiGYm'f'
D5 8 '+% S' B cdbfcU'hi; c] YfbUbWUbX'5 Xa]b]gfUjcb

GYm'f'k c UXX]hcbU Wi fgYgZ'ca h YZc''ck]b[.

D5 8 '+% S''' FY]]cbU Dc']h]WgUbX'Dc']W'h
D5 8 '+%SS'' < YU'h Dc']W'h
D5 8 '+% S''' 7cbh'Ya dcfU'mDi V]Wggj Yg
D5 8 '+% S' @YUXYfg']d UbX'9h]Wg]b Di V]WGYfj]W'
7A '+%SS' -b]fcXi W]cb'rc' 7cbU]WmA UbU Ya Ybh

-G, S) S'' -bZ'fa Ujcb Gng'hYa gD'c'YMA UbU Ya YbhA Y'h cXg
-G, S+S'' @Y] U UbX'9h]W'ggj Yg]b -bZ'fa Ujcb Gng'hYa g
-G, -) S' -bZ'fa Ujcb Gng'hYa gDc']W'UbX'GhU] m

Gi Xyblgk]''gy'Ym'cbYch Yf'] fUXi UY'-Gcf'A D5 Wi fgYcf'ch Yf'] fUXi UY'Wi fgYUgUddfcj YX Vm'h Y; fUXi UY'8]fYm'f'=-G; - %SzGdYMU D'c' Ym'g]b -bZ'fa Ujcb Gng'hYa gZ=-G; - %Z7ccdYFU h] Y9Xi W]hcbzUbX'=-G; - %Z-b]h'f'bg']d]b -bZ'fa Ujcb Gng'hYa gUFYUa cb['h YWc]WgUj U'UY YXdYbX]b[i dcb h Ygi Xyblg'VOW[fci bXUbX[cUg'

FYeI]fYX

D5 8 '+())' 5 Xa]b]gfUj Y@Uk

Gi Xyblgk]''gy'Ym'h fYUXX]hcbU Wi fgYgZ'ca h YZc''ck]b['Wb]g]h'bhk]h WfYf'] cUg

7A '+%SS' -b]fcXi W]cb'rc' 7cbU]WmA UbU Ya Ybh
D5 8 '+% S''' FY]]cbU Dc']h]WgUbX'Dc']W'h
D5 8 '+% S' @cW'; c] Yfba YbhUbX'7]hmA UbU Ya Ybh
D5 8 '+%SS' < YU'h Dc']W'h
D5 8 '+% S''' 7cbh'Ya dcfU'mDi V]Wggj Yg
D5 8 '+% S' @YUXYfg']d UbX'9h]Wg]b Di V]WGYfj]W'
D5 8 '+% S' W]cb'rc' UbU Yf'Y]h'U' UbX'@cW' D'Ubb]b[
; 9C; '+%SS' ; -GZ'f'5 Xa]b]gfU'rcfg
D5 8 '+ - S' Di V]W]bUb]U'A UbU Ya Ybh
D5 8 '+(+ S' -ggj Yg]b'7f]a]bU' i gh]W'5 Xa]b]gfUjcb

PROFESSIONS

a Yh.cXgg W UgXYgMdhj YUbX'lbZfYbhU' gUhgjWz]bW X]b['a i 'hd Yfy[fygg]cbzk]''VY Wj YfX''-bj c'j Yg]bhbgY\UbXgcb W'a di hf' k cf_ i g]b['gUhgjW' g'Zk UY"

PAD 6300. Public Organization Theory. 3-0-3.

Prerequisite: Admission to graduate study.

CZfzgWbWdli U 'UbXdfUMjW' dYfgdYm]j Yg Zcf'i bXYfgUbX]b['UbX'a UbU]b['cf] Ub]nU h]cbg''5 g]Ymfi a 'cZh Ycf]Yg'cZcf[Ub]nU]cb' k]''VYl Ua]bYX''H YWbWd]gUbX']gg Yg'lc VY X]gWggX']bW XYa YWUb]W UbXcf[Ub]ga]W Ug]Ym]g'cZcf[Ub]nU]cbg'zcf[Ub]nU]cbU' W'hi fy' UbX'dc`]h]Wzcf[Ub]nU]cbU' dgn'WcXnbUa]WzUbX'

cZh Yh Ycf]Yg'Zcf UfYU]m]j YdfUMjWk]''VYh.Y ZcWg'cZWUggX]gWgg]cbg"

PAD 6350. Public Service Budgeting. 3-0-3.

Prerequisite: Admission to graduate study.

HWb]ei Yg'cZUbUb]U' a UbU] Ya YblzW]YU]m]b' `cW' U] YbW]g'Wj Yf]b['h Ycf][]bgUbX'hndYg'cZ a cXfb Vi X] Y]b[z'Zca `]bY!]h'a zdfc[fUa 'UbX' dYfZ'fa UbWz'lc n'Yfc!Ug'X'Vi X] Y]b["5 h]b]h]cb' k]''VYdUX]lc Vch h Ydc`]h]Yg'cZh YVi X] Y] UfndfcWgg'UbX'h YU]bUb]U' UbX'UW'i bh]b[` df]b]Vd Yg]bj c'j YX'z k]h. Ugfcb['Ya d\Ug]gcb' \UbXg'cb Y' YfV]g'g"

PAD 6450. Governmental Relations. 3-0-3.

Prerequisite: Admission to graduate study.

9l Ua]bYg'h Y]bh]fUM]cb V]k Yb h YZXYfUz gUhzUbX'cW'`y Yg'cZ[c] Yfba Ybh]b h Y I b]hXGUhg'UbX'h Yf]bh]fUM]cb k]h bcbdfcU]h UbX'ch Y' df]j UYg'W'cf'cf[Ub]nU]cbg' GdYU' U]h]h]cb]g[]j Yb'lc h YWbg]h]h]cbU' UbX'Ug'W' fyU]h]cbg\]dgV]k Yb h Yg'`y Yg'cZ[c] Yfba Ybh'

PAD 6500. Policy Analysis. 3-0-3.

Prerequisite: PAD 6250.

8YUg'k]h h Yh Ycf]Yh]W']gg Yg'UbXdfUMjW' hWb]ei Yg'cZUbUb]U' Yg'U]m]h]cbV^ YUW



YbYf| m

Social Work

Master of Social Work (MSW)

Office: (770) 423-6630

Fax: (770) 499-3176

Social Work (LMSW) and they may also pursue

(LCSW). In addition, students interested in becoming a certified addiction counselor have

- Your experience in social work, including
- The life experiences impacted your inter-
- Your personal qualities that will be useful in
- Your values that will be useful in servR servR



ADVANCED STANDING COURSE SEQUENCE		39
Semester 1 - Summer		9
SW 7720	Bridge to Practice I: Diversity, Social Justice, and Ethics	3
SW 7730	Bridge to Practice II: Psychopathology and Assessment	3
SW 7740	Bridge to Practice III: Practiced Focused Research Methods	3
CONCENTRATION CURRICULUM		
Substance Abuse		
Semester 3 - Fall		15
SW 8701	Individual and Group Practice in Addictions	3
SW 8714	Addiction Policy in the United States	3
SW 8707	Bio-Psycho-Social Theories of Addiction	3
SW 8712	Advanced Field Placement III	3
	Elective	3
Semester 4 - Spring		15
SW 8814	Seminar in Substance Abuse	3
SW 8815		

the thinking of experts in the field.

SW 7701. Social Work Practice I. 3-0-3.

Prerequisite: SW 7702.

tion I and II require a minimum of 560 hours.

SW 7709. Foundation Internship/Integrative Seminar II. 0-16-3.

Prerequisite: Admission to MSW program.

field educational objectives in an agency setting.

duration of the field placement. Field Instruction I and II require a minimum of 560 hours.

ADVANCED STANDING BRIDGE COURSES

SW 7720. Bridge to Practice I: Diversity, Social Justice, and Ethics. 0-16-3.

Prerequisite: None.

As an introductory course, Bridge to Social Work Practice I: Diversity, Social Justice and Ethics

of Ethics. It builds on the generalist foundation

social and economic justice are explored relative

group affiliation places one at risk for discrimi-

will be afforded opportunities to engage in in-

SW 7730. Bridge to Practice II: Psychology and Assessment. 0-16-3.

Prerequisite: None.

content gained in the BSW program. To lay a

learning will complete 480 hours of supervised internship (240 clock hours per semester) dedicating 2 full days per week (Mondays and Tuesdays)

SW 8713. Advanced Field Placement
IV. 0-16-3.

Prerequisite: SW 8712.

knowledge and experience from the first year internship and their first advanced field placement (fall semester) as they culminate their field experiences. Students will continue refining their clinical skills completing 480 hours of supervised internship (240 clock hours per semester) dedicating 2 full days per week (Mondays and Tuesdays) for the duration of the academic year.

SW 8715. Children and Youth Mental
Health. 3-0-3.

Prerequisite: Admission to the MSW program.

SW 8713. Advanced Field Placement IV.
0-16-3.

Applied Statistics

Master of Science with a
Major in Applied Statistics

CZÚW: GMBW) \$+
D\cbY: f+SE(&!*' %
: U.: f+SE(&!**&

General Requirements for Admission to the MSAS Program

1. Graduate Record Examination (GRE) scores of 150 or higher on the verbal section and 150 or higher on the quantitative section.
2. Minimum cumulative undergraduate GPA of 3.0 on a 4.0 scale.
3. Completion of a bachelor's degree from an accredited institution.

MA

MSAS Course Descriptions

STAT 7000. Introduction to Mathematics for Statistics. 3-0-0.

Prerequisite: Admission to the MSAS program or permission of the program director.

ƒUjċ ħgg' : ĩg' Y']bZfa Ujcb UbXĥ Y7fUa Yf!

ƒUjċ ħgg' : ĩg' Y']bZfa Ujcb UbXĥ Y7fUa Yf!

Xf]j Uĥj YgZUdd']Wĥcbgĥc ŪbX]b['a]b]a U

STAT 8110. Quality Control and Process Improvement. 3-0-3.

Prerequisite: STAT 7010.

Ūck WUfĥgUbX'gĥa d'Y[fUd\]W' ĥcc'g'

STAT 8120. Applied Experimental Design. 3-0-3.

Prerequisite: STAT 7010 and STAT 7020.

UbX'Y[] Ybj Wĥ'fg" GUĥg]W'g'Zk ŪYĥcd]W' YX]Ĥ

STAT 7010. Mathematical Statistics I. 3-0-3.

Prerequisite: Admission to the MSAS program.

gei ŪYzgd']Ĥd' cĥfYdYUĤXa YUĥ fYgZUĥ'f]U'

GUĥg]W' g'Zk ŪYk]' 'Wĥi Ĥ]'nYX"

STAT 8130. Measurement System Analysis. 3-0-3.

Prerequisite: STAT 7010 and STAT 7020.

dŪfĥcZg]Wĥ]ŪWĥ dYf]a YbĤĤjcb'cf]bXi gf]U'

STAT 7020. Statistical Computing and Simulation. 3-0-3.

Corequisite: STAT 7010.

Ĥd]W'Wj YfYX']b' GĤĤH+S&S'

ĥ]g'Wi fgY' E'i UbĤZĥ]b['fYdYUĤ]]māfYdfcXi W

WUgYX'cb' d'fcVUĤ]]mX]gf]Vi ĤcbgZ]gWĤM

STAT 8140. Six Sigma Problem Solving. 3-0-3.

Prerequisite: STAT 8110 and STAT 8120

Ĥ YZ'W'g'cZĥ]g'Wi fgY']g'Udd' n]b['Gĥ] Gĥ[a U

UbUngĥZbcb!dŪfUa Yf]WUbUngĥgUbX'gĥa d']b[' ĤWb]ei Yg";]j Yb'ĥ Y']a dcfĤbW'cZĥ YG5G

k]' zVnXYŪb]Ĥcbz'fYŪbYUbX']a d'fcj Yĥ Yf' G5Gdfc[fUa a]b['g.]'g" ĤY'W'gg'k]' 'i Ĥ]'nY' fYU!k cf'X'XUĤgYgZ'ca Ūj Ūf]Ym'cZ]gWĥd']bYg']bW X]b[zŪbUbW'za Ūbi ZUĤi f]b['UbX'a YX]WbY"

Wi fgY'g'Gi Xybĥg'k]' 'UbUmnY']bXi gf]U XUĤ

Gĥ] Gĥ[a Ūa YĥcXg' G]bW'Gĥ] Gĥ[a Ūa YĥcXg'

]Yg'UbX'gĥi Xybĥdfc'Wĥg'"

STAT 7030. Mathematical Statistics II. 3-0-3.

Corequisite: STAT 7010.

Wi fgY']g'Ugnbĥ Ygĥ'cZdf'cf' 'YŪb]b["Gi Xybĥg'k]' 'ĤŪ Yĥ Y5a Yf]Wb'c'c'Wm'z'f' E'i Ū]m'i

WbŪXybW']bĥfj UgUbX' nĥcĥ Ygĥg'ĥg']b[/ g ZUĤ]Wĥg]Uĥ]W' B Yna Ūb'DYŪf'c' b'ĥ Yc'fYā z

gi Xybĥg'ŪY' \Ū]b[X]ZŪW' ĥm'...

STAT 8210. Applied Regression Analysis.
3-0-3.

Prerequisite: STAT 7010 and STAT 7020

!

!

YfgUbX'jbŪi YbHŪ'

Additional Graduate College Options

Additional Graduate College Options

2. Graduate Certificate in Leadership and Ethics
3. Gerontology Concentration

The Accelerated Bachelor's-Master's Degree Option provides qualified KSU undergraduate students the opportunity to begin graduate work at KSU in their senior year and to simultaneously satisfy some remaining requirements for the bachelor's degree and the beginning requirements of an advanced degree.

Students may use up to nine credit hours of graduate-level courses offered within a single degree program in meeting the requirements of both a bachelor's degree and a master's degree. Students applying for this program must:

1. Have completed at least 18 hours of course work at Kennesaw State.
2. Have a KSU GPA of 3.5 or better.
3. Be within 21 semester hours of graduation.
4. Be in good academic standing (students must satisfy all prerequisites for those graduate courses).
5. Meet all requirements for admission (including tests such as GMAT or GRE) into the specified graduate program (except for receipt of the undergraduate degree); and
6. Submit an application for admission to the ABM Degree Program, along with all necessary admissions documentation to the Dean of the Graduate College by the deadline dates listed below.





This concentration is available to all KSU graduate students, regardless of program, who wish to pursue applied careers in the various fields and professions that have components in gerontology and/or geriatrics. This interdisciplinary program provides core knowledge of gerontology and lifespan human development in conjunction with more specialized and in-depth training specific to particular disciplines in which students are planning to work (e.g., nursing, public administration). The concentration features the opportunity for graduate students to develop specific sets of practical skills for use in a variety of applied markets.

- GERO 6100- Sociocultural Aspects of Aging
- GERO 6200- Health Care for Older Adults
- GERO 6300- Psychology of Aging

Focuses on the social and cultural aspects of aging. Topics covered include gerontology, geriatrics, and geronteology. Total number of courses required for this concentration is 7.

first time in the 1997-98 academic year to

on-campus and remote access to the internet;

Student Office delivered online; student training
in use of computer technology increased

eamultime

Computing Services

ing field, Information Technology Services

stantly refine, improve

dial-in services.

isters more than 700 student work stations

Multimedia Development Group
(MDG)
The Multimedia Development Group (MDG)

on the fourth floor of the library,

training and production assistance; graphics
creation, multimedia file conversion, audio/
pression, desktop publishing, and CD-ROM

Instructional Equipment

- student publications, such as The Sentinel (newspaper), The Talisman (yearbook), and Share Magazine (art and literary magazine);
- minutes of President's Cabinet meetings, maries, accreditation reports and studies;
- KSU memorabilia including groundbreak-
f ags and banners, and commemorative tee shirts; and
- photographs, video tapes and cassette

Educational Technology Training Center

Center (ETTC) is proud to be the largest of
the 13DOE Educational Technology Centers

on the second floor of Kennesaw Hall. The

MDG Media Lab Hours

staff, and students Monday - Thursday from
8:30 a.m. - 9:00 p.m., Friday from 8:30 a.m. to
5:00 p.m., and Sunday from 1:00 p.m. - 6:00

Department of Archives
and Records Management

disposal of records to satisfy the legal, fiscal

and pita, crudités of vegetables, fruit (whole & cut up), pastries, cereals, and a large assort-

whereby each department within the five

students select a specific program of study,

-

Student Athlete Support Services

-

-

Counseling and Advisement Services
Resource Library

-

-

available for using CASSI (Career Assisted
Study Skills Instruction), Pinpoint career

Career Services Center

-

adequately equipped first-aid stations at str-

by dialing ext. 6666. There are police officers,
who are trained in C.P.R. and State-certified

office and class hours. Comprehensive medi-

cal attention beyond minor first-aid treatment,

- 1) If the student is conscious and alert and
attending officer will comply with the
- 2) If the student is unconscious, he/she will
by ambulance. The attending officer will
- 3) In the case of injury to students partici-
- 4) Every reasonable effort will be made to

ness, located in room 131 of the Student Recre-

- Special events: Lunch-n-learns, health fairs,

- Health Assessments: Check out your cur-

- Fitness Assessments: How is your fitness level? We offer MicroFit computerized fitness

and flexibility. The computerized testing

- Educational Materials: The Wellness Library

are M-Th 9-6 Fri. 9-5 and Saturdays 9-Noon.
For more information, contact the Wellness Center at 9

government-issued document that includes a photo (e.g. driver's license or passport) for identity verification. New regulations of the

protection, this copy will be stored off-site.

versity are required to carry an official KSU Identification Card. The Card Services Center produces this card on campus in Room 219 of

tification; in security applications; for access to events, activities and resources; and for

agree to an un-obstructed facial photo. All stu-

ID Card to University officials upon request.

or by ACH to a third-party bank. Students may

Parking Decals

- ITS Computer Lab Area -
4th floor Burruss Building
- Kennesaw Hall -

ized, age-appropriate programs through KIDS
Institute (Ages 50 and older).
Continuing Education Units (CEUs) are
programs with one CEU awarded for 10 con-
courses carry PLUs for teacher recertification.

770-423-6765 for more information and to

Student Development Center

enrich the college experiences of specifically
identified student populations, including

Kennesaw State University (KSU). Through

Center; and Global Village - students are

the Carmichael Student Center, Suite 267, is
open weekdays from 8:00 a.m. to 7:00 p.m.,
Monday through Thursday, and 8:00 a.m. to

phone at 770-423-6443

the office sponsoring the program at least five

International Student Retention Services

The Office of International Student Retention Services (OISRS) serves as an advocate and

not limited to, handicap-accessible parking

bility, modifications of printed materials, sign

and referrals regarding financial matters. Once

Eligible students deliver certification letters

Student Orientation. All newly admitted F1

must attend this orientation. The office seeks to

Students taking courses on-line or at other sites

abled Student Support Services office by phone (770-423-6443) or email (cpope@kennesaw.edu)

dent is enrolled he/she automatically qualifies

The Office of International Student Retention

Support Services by TTY at 770-423-6480

student organization that is directly affiliated with this office and provides leadership

KSU Black Alumni society. This office also

National PanHellenic Council (NPHC) for

is the newest initiative by the Office

and students to specifically address the retention

currently in the process of becoming an office

who are specifically invested in their interests.

Judiciary Program

opened in 1985 to adjudicate infractions of the

at least fifteen selected students and twenty-

dent Code of Conduct, and the traffic court,

- a minimum 2.8 overall G.P.A.;
- a strong interest in protecting the reputation of the Code of Conduct are upheld;
- successful personal interview(s);
- two personal references who will testify to your character and integrity;
- a commitment to uphold the Judiciary

tor for University Judiciary Programs at (770) 499-3403 or visit the KSU Judiciary Program

Intercollegiate Athletics

Initiated in the fall of 1982, KSU's intercol-

legiate sports are a member of the Atlantic Sun Conference (A-Sun) and Division I of the National Collegiate Athletic Association (NCAA). The A-Sun's membership

includes Gardner-Webb, Jacksonville, KSU, Lipscomb,

and Western Carolina. KSU sponsors twenty-two varsity sports: ten for men (baseball, basketball, cross-country, golf, indoor track and outdoor track) and eight for women (basketball, cross-country, golf,

tennis, volleyball, and softball). Varsity cheer and dance

club sports (see sports clubs).

Students who are accepted for admission must meet any financial obligations, includ-

Kennesaw State University Alumni Association (KSUAA) Chartered in 1977, the Kennesaw State

University Alumni Association is a nonprofit, educational corporation. The asso-



University President:

Provost and Vice President for Academic Affairs:

Dean, College of the Arts:

*Dean, Michael J. Coles College of Business and Tony
& Jack Dinos Eminent Scholar Chair of Entrepreneurial
Management:*

Interim Dean, Bagwell College of Education:

*Dean, WellStar College of Health and Human
Services:*





@ci lg|UbUGHYI b|j Yfg|miGng|Ya `CZÚWZ



KSU Diversity Vision Statement



KSU Freedom of Assembly and Expression

maintained by the University official to

official shall advise the student of the correct official to whom the request should

versity official responsible for the record,

necessarily reflect the position of Kennesaw

affirms its commitment to the freedom of

when notified of the right to a hearing.

s c

Rights Pertaining to Student Records

department, or other appropriate official, a written request that identifies the

The University official will make arrange

official has a legitimate educational interest if the official needs to review an education record in order to fulfill his or

of name, address, telephone number; major;

iversity's student conduct regulations, just as

paper or used in a project, they should be

conduct regulations or specific departmental

University Materials

fulfill their responsibilities and enjoy the exer

II. Academic Honesty

State University is reflected in the credits and

University Records or Academic Work

D. Malicious Removal, Retention, or Destruction of Library Materials

E. Malicious/Intentional Misuse of Computer Facilities and/or Services

A. Plagiarism and Cheating

when the ideas, theories, data, figures,

a student identification card is prohibited,
as is the use of an identification card by

tenses any additional student identifica-

A. Disorderly Assembly

tials to properly identified university fac-

G. Revisions of Academic Honesty
Regulations

B. Disruptive and Dangerous Conduct

C. Disruptive Speech

III. Disruption of Campus Life

D. Physical Attack

E. Sexual Harassment/Assault

No student shall subject another person to

F. Theft or Damage of Personal Property

subject to immediate dismissal from the insti-

G. Theft or Damage of University Property

form; creating excessive fatigue; physi





I. Academic Misconduct

Academic misconduct is defined in Section

ademic misconduct, and filing formal charges

official and proceeding through the due pro

seriousness; the right, as victims, to be treated with dignity; and the right for

specific recourse to the incident or incidents

and adjudicated by the duly constituted
mental entity in which the crimes occurred;

<http://www.kennesaw.edu/judiciary>

III. Sexual Assault

disciplinary officials; or (2) report crimes

Enrollment Services Office (770) 423-6310

for the commission of crimes against them;
or assumed the risk of being assaulted; or

the institution permits the accused; and
the right to be notified of the outcome of

to notification to victims of the results of

- A student endangers him/herself or others while under the influence of alcohol or

fighting or on-campus DUI);

- Student who committed the violation

controlled substance;

- The occurrence of an arrest (i.e., this might

cultivation of drugs or alcohol);

- The occurrence of significant property damage;
- The occurrence of a major disruption to the university's educational mission;
- When an administrator determines that any

will likely result in the student's suspension;

- L
- cont^a led

*Safe and Sound
Sexual Assault: Myths and Reality.*

regarding crime statistics from this office.

Drug and Alcohol Violations

effectively. Parental notification is done when

under the age of 21 may be notified when a

circumstances leading to parental notification

and impede judgment. Alcohol and drug

Environmental Health and Safety

KSU Position Statement on
Environmental Awareness

KSU Mission Statement on
Occupational Health and Safety

II. Alcohol Policy

KSU is a Restricted
Smoking Campus

in areas specifically designated for smoking.

Drug and Alcohol Policy

I. Introduction

university judicial code sanction, a student

V. Drug and Alcohol Education
Programs and Assistance Available
A combination of several campus offices will

Detailed sanctions are defined in the Stu-
dent Rights and Responsibilities
Board of Regents' Policy Manual, Classified
policy statement available in the Office of

on the second floor of Kennesaw Hall. The
staff members qualif ed to work with those persons
are certif ed as Prime for Life facilitators. The

IV. University Sanctions for Viola-
tions of the Alcohol and Drug Policy

Students who violate the policy on alcohol and drugs, shall be subject to

disciplinary action up to and including suspension.

Students who violate the policy shall be subject to disciplinary action up to and

Administrative Withdrawal of Students

from the university when, in the judgment

significant danger or threat of physical harm

defined in the Student Code of Conduct and

ate hearing prior to a final decision concerning

abuse programming is presented in conjunc

4388 is located on the first floor of the Carmi

Grievance Procedures for Students

Grievance Procedures for Admissions, Privacy Rights and Other Non-Academic Matters

ested students. Students who are first time

VI. Annual Distribution of KSU Drug and Alcohol Policies Required
The Office of the Dean of Student Success

university catalog (see section on confidentiality)

forms of financial aid are heard by the Financial

Grievance Procedure for Discrimination and Retaliation

to the appropriate EEO's office (currently the

the student believes that his/her final grade

shall be addressed as specified in this catalog

office has received a written complaint containing specific allegations of discriminatory

A. The EEO officer (or his/her designee)

B. If the EEO officer (or his/her designee), after investigation, finds that the student

notification will take place within sixty

the EEO's office.

C. If the EEO officer (or his/her designee), after investigation, finds the student may

is made. The investigation and notification

office. On the same date that written notification is delivered to the parties, the EEO officer (or his/her designee) will contact

information of the five members of the advisory committee to the chair of the senate to the EEO officer (or

D. Prior to the hearing the EEO officer (or

from among the five members. The chair

be notified in writing at least ten business days prior to the hearing; the right of the person

specific nature of the complaint against him/

on which it is based; and the right of both

the EEO officer (or his/her designee), the

and the EEO officer (or his/her designee).

be based on a majority vote, and be rendered by a preponderance of evidence. Only the five

the EEO officer (or his/her designee) may

EEO officer (or his/her designee), the chief legal officer for the university, and the president of the university within five business



Foundation's officers and committee
chairmen are as follows:

EXECUTIVE COMMITTEE

Thomas M. Holder (Chairman of the Board)

J. Larry Stevens (Executive Vice Chairman)

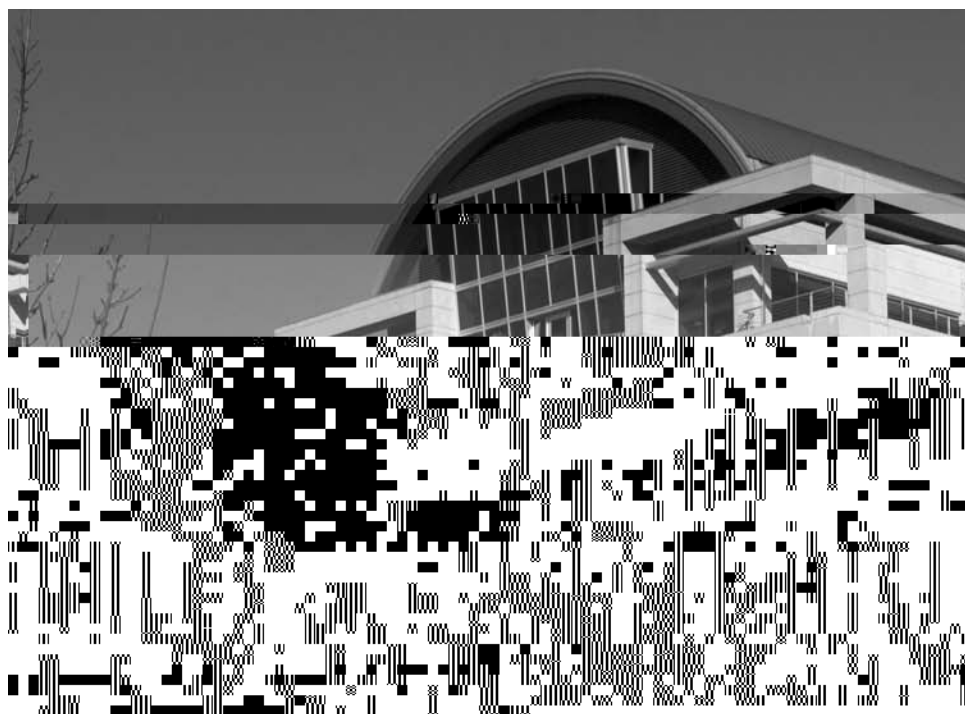
Lawrence D. Wheeler, Vice Chairman-
Advancement

Richard R. Corhen, Vice Chairman-Finance

Hollister "Holly" A. Hill, Vice Chairman-
Legal and Administrative

George W. Ance f . Ance f ice Chairman-Finance





D OF REGENTS OF THE UNIVE
TEM
• OF GE

BOARD OF REGENTS
Hugh A. Carter, Jr., Atlanta

William H. Cleveland, Atlanta**

Robert F. Hatcher, Macon

Felton Jenkins, Madison

Donald M. Leeborn, Jr

James A. Bishop, Sea Island
First District (2011)

Doreen Stiles Poitevint, Bainbridge
Second District

Doreen Stiles Poitevint, Bainbridge
Second District

Doreen Stiles Poitevint, Bainbridge
Second District

INSTITUTIONS OF THE UNIVERSITY
SYSTEM OF GEORGIA

Degrees Awarded: A-Associate; B-Bachelor's;
J-Juris Doctor; M-Master's; S-Specialist in Educa-
tion; D-Doctor's

Research Universities

University of Georgia, A, B, J, M, S, D

Georgia Institute of Technology, B, M, D

State University, A, B, J, M, S, D

Medical College of Georgia B, M, D

Regional Universities

Georgia Southern University, B, M, S, D
Valdop I, A, 1 Valdop

University System of Georgia Map



About Kennesaw State 5

profile 5

Academic Calendar

Academic Exclusion 35, 85

Conflict Management (MSCM) 85

Academic Fresh Start

for Readmission 36

Academic Fresh Start

for Second Degree 37

Academic Honesty 242

See also Student Code
of Conduct

Academic Misconduct 242

Academic Policies and Procedures

academic fresh start for second degree 37

academic warning 35

auditing policy for graduate courses 27

candidacy 28

course load 29

course repetitions 29

cross registration 29

member colleges 29

single degree program 36

full-time load 28

grade-point-average 31

grade appeal procedure 1

withdrawal from courses 29

Academic Probation 35

Academic Warning 35

Accelerated Bachelor's -

Master's Degree Option 203

Accounting - Graduate Admission
Degree Requirements.

See Master of Accounting
(MAcc) Program Section

Accounting Degree.

See Master of Accounting
Degree (MAcc)

Accreditation, KSU 5-6

Syndrome (AIDS) Policy 239

Add-On Programs (Education).

See Education Add-On Programs

Additional Graduate Degree

College Options 203

course descriptions 205-206

Administration

listing of officers 225

Admission. *See* Graduate Admission

Adolescent Education. *See* Master

of Education (M.Ed.) in

Adolescent Education

Adult Learner Programs 219

- Advising
undeclared students 212
- Alumni Association (KSUAA) 223
- Americans with Disabilities Act (ADA) 238
- Anthropology Graduate Courses 150
- Appealing
1
- Appeals Procedures
grade appeal procedure 1
- Application Procedures for
Graduate Admission 9
See also Graduate Admission
- Applied Music (MAUP)
Graduate Courses 157
- Applied Statistics. *See* Master of Science in Applied Statistics
- Atlanta Regional Consortium for Higher Education 29
Member Colleges 29
- Auditing Policy for Graduate Courses 27
- Bagwell College of Education 89
- Board of Regents
members 266
- Business-Graduate Admission
Degree Requirements.
See MBA Program Section
- Business Administration.
See MBA
- Business Law (BLAW) Courses 55
- Calendars
Academic University Calendar
- Campus Bookstore 211
- Campus Information

See Inside back cover
- Campus Map.
See back of catalog
- Candidacy 28
- Card Center Services - KSU 215
ID Cards 216
KSU Debit Card 216
Parking Decals 216
- Career Services Center 213

creative writing and professional writing
for international audiences 183
- Chairs - Instructional Department
Chairs - KSU 225-226
- Chemistry (CHEM)
Graduate Courses 150
- Code of Conduct.
See Student Code of Conduct
- Coles College of Business
vision and mission statement 49
- Computer Science.
See Master of Science in Applied Computer Science
- Computer Science-Graduate Admission Degree
Requirements.
See Master of Science in Applied Computer Science Program Section
- Computing and Information Resources
Computing Services 209
department of archives and records management 210
Education Technology Training Center 210
Horace W. Sturgis Library 208
mandatory KSU e-mail account 207
Multimedia Development Group (MDG) 210
Online Learning Services Department 209
Teacher Resource and Activity Center (TRAC) 211
Vice President for Information V oo

English Education (ENED)
 course descriptions 151
 English Graduate Courses 150-153
 English to Speakers of
 Other Languages
 (ESOL) Add-On Program 127
 Expenses
 2007-2008 expenses/fees 13

Graduate Research Assistantships 23
 Institutional Employment 23
 Loan Programs 22
 Emergency Loan Program 22
 Federal Work Opportunity Program 23
 Federal Work Study Program 23

Faculty.
 See Graduate Faculty

Fax Fee 16

Fees
 student services 224

Fees and Expenses
 2007-2008 expenses/fees 1

 1
 diploma fee 16
 diploma replacement fee 16
 fax fee 16

 14
 1

late payment fee 16

late registration fee 16

mandatory student fees 14

Master of Accounting Fees 1

 Computer Science program fee 16

Master of Science in Conflict

 Management program fees 15

 Program fees 1

motor vehicle parking 14

 1

parking fee 14

penalty fee for returned check 16

registration fee waiver

 for senior citizens 16

residency requirement 17

summary of expenses/fees

 2007-2008 14-15

 1
 withdrawal/refund of student fees 16

Finance (FIN) Courses 57

Financial Aid

 Alternate Loan Program 2

 Graduate Cost of Attendance (COA) 21

 Graduate Study Work Opportunities

 Career Services 23

 Federal Work Study Program

 (FWS) 23

Leadership and Ethics 204
 requirements for Career Growth
 MBA students 204
 requirements for MPA students 205
 Professional Writing for
 18
 admission requirements 18
 program of study 18 184
 Graduate Education Course
 Descriptions 129-158
 Graduate Education Programs
 Accreditation Statement 89
 Graduate Faculty
 Ex Off cio 225
 graduate teaching faculty 226-236
 Graduate Programs of Study Listing 1
 Graduate Student Services
 adult learner programs 219
 campus bookstore 211
 Card Services Center - KSU 215
 career services center 213
 Continuing Education 218
 Counseling and Advising Program
 Services Center (CAPS) 212
 CSL Student Leadership Programs 217
 disabled student support services 219
 food services 211
 and Wellness (Center) 214
 health services 213
 information booth 217
 Institute for Global Initiative 217
 retention services 220
 intramural and recreation services 215
 judiciary program 223
 Kennesaw State University Alumni
 Association (KSUAA) 223
 Lifelong Learning Center 221
 minority student retention services 221
 print and copy services 216
 residence life 214
 Student Athlete Support Services 213
 student community service/
 volunteer KSU 222
 student services fees 224
 Graduate Student Work Opportunities
 Career Services 23
 Federal Work Study Program 23
 graduate research assistantship 23
 institutional employment 23

Graduation Requirements
 Grievance Procedures for
 Admission Privacy Rights
 and Other Non-Academic
 Matters 257
 Grievance Procedures.
 See Student Administrative
 Withdrawals and Grievance
 Procedures

Health Promotion & Wellness
 (Center) 214
 Health Services, campus 213
 History (HIST)
 Graduate Courses 153-154
 Human Relations Position
 Statement, KSU 7, 237

Immunization Requirements 12
 Inclusive Education
 core requirements 98
 dissertation 98
 electives 98
 program description 97-98
 In-State Tuition 13
 Grievance 7831EMC /Span y0048lp BDCBDC TO
 Procedures
 Procedures

- English to Speakers of Other Languages (ESOL) 127
 - Inclusive Education 127
 - 128
 - Reading 128
 - 124
 - 128
 - non-degree to degree status 124
 - Master of Education (M.Ed.)
 - in Adolescent Education
 - admission requirements 106
 - contact information 106
 - degree requirements 106
 - full standing 10
 - petition to graduate 107
 - portfolio 107
 - program of study 107-108
 - transfer credit 107
 - in Early Childhood Education
 - admission requirements 109
 - Early Childhood Education 109
 - program of study 11
 - contact information 109
 - course descriptions (EDL) 13 138
 - degree requirements 109
 - grades in graduate courses 11
 - licensure requirements 11
 - non-degree candidates 11
 - petition to graduate 11
 - program of study 11 -112
 - 11
 - Master of Education (M.Ed.)
 - in Educational Leadership
 - admission requirements 114
 - concentration in Technology Leadership
 - 114
 - program of study 117
 - 114
 - course descriptions 138-141
 - grades in graduate courses 11
 - non-degree candidates 11
 - petition to graduate 11
 - program of study 11 117
 - 11
- Master of Education (M.Ed.)
 - in Inclusive Education
 - admission requirements 119
 - 119
 - degree requirements 12
 - 120
 - full standing 119
 - petition to graduate 119
 - program of study for M.Ed.
 - in Inclusive Education
 - (concentration in Individualized General Curriculum) 121
 - program of study for M.Ed.
 - in Inclusive Education - TESOL 122
 - 119
- Master of Public Administration
 - 18
 - admission requirements 18
 - 18
 - 188 19
 - grades 18
 - petition to graduate 18
 - program description 18
 - program of study 18 187
 - 18
- Master of Science in Applied Computer Science
 - admission requirements
 - 7
 - spring admission 7
 - 7
 - course descriptions (CS) 8 82
 - financial information
 - 77
 - financial aid 77
 - payment of fees 77

- Master of Science in
- admission requirements 8
 - 8
 - 86-87
 - degree completion 8
 - financial information and assistance 8
 - grade expectations
 - 8
 - non-degree admission 8
 - petition to graduate 8
 - program description 8
 - program fee 1
 - program mission 8
 - program of study 8
 - provisional 84
 - 84
- Master of Science in Information Systems
- admission requirements 159
 - 159
 - 164-1
 - grades in graduate courses 1
 - Graduate Certificate Program
 - in Information Security and Assurance 163
 - MSIS program of study preparatory
 - 16
 - non-degree admission 16
 - petition to graduate 16
 - preparatory knowledge clusters 16
 - program description 159
 - program of study 161 1
 - 1
- Master of Science in Nursing
- admission requirements 1 7
 - Advanced Care Management and Leadership Program of Study 171-172
 - 172 174
 - 167
 - course repeat policy 168
 - grades 168
 - petition to graduate 168
 - 168
 - WellStar Primary Care Nurse Practitioner Program of Study 168 169
 - 169 171
- Master of Social Work
- admission requirements
 - advanced standing admission requirements for admission 192
 - general admission requirements
 - 191
 - 191
 - 194-198
 - degree requirements 192 19
 - grades 192
 - non-degree admission 192
 - petition to graduate 192
 - 192
 - Mathematics Education (MAED)
 - Graduate Courses 155-157
 - Mathematics (MATH)
 - Graduate Courses 154-155
 - MBA-Graduate Admission
 - Degree Requirements. *See* Business Degree Programs Section
 - MBA - Career Growth MBA
 - admission criteria for non-degree
 - 1
 - admission requirement
 - core requirements 2
 - 3-62
 - elective requirements 2
 - 1
 - foundation requirement 1
 - grades in graduate courses
 - petition to graduate
 - program description 50
 - program of study 1
 - 1
 - MBA - Coles Executive MBA
 - admission criteria for non-degree student 68
 - admission requirements 68
 - candidacy 69
 - grades in graduate courses 69
 - petition to graduate 69
 - program fee 15, 69
 - program of study 69-7
 - transfer credit 69
 - MBA - Georgia WebMBA
 - admission criteria for non-degree
 - 8
 - admission requirements
 - course requirements
 - foundation requirements
 - grades 4
 - 4
 - mandatory orientation 4

Reading (EDRD)
 Graduate Courses 149-150
 Reading Add-On Program 128
 Readmission to
 Graduate Study 11
 Records, student.
See Student Records
 Refund/Withdrawal of
 Student Fees 16
 military service refunds
 and reenrollment 17
 Regents' Policies Governing the
 for Tuition Purposes 18
 Registration 27
 Atlanta Regional Consortium
 for Higher Education 29
 Registration Fee Waiver
 for Senior Citizens 16
 Residence Life 214
 Residency Requirement 17, 28

Satisfactory Academic
 Progress Standards 24
 Satisfactory Graduate Level
 Student Performance 35

academic warning 35
 Science Education (SCED)
 Graduate Courses 158
 Science (SCI)
 Graduate Courses 158
 Sexual Assault 252
 Social Science Education (SSED)
 Graduate Courses 158
 Social Work
See Master of Social Work
 Social Work-Graduate
 Admission Degree
 Requirements
See Master of Science in
 Social Work Program Section
 Special Education
See Master of Education
 (M.Ed.) in Inclusive Education
 Statistics
See Master of Science in
 Applied Statistics

Student Administrative
 Withdrawals and
 Grievance Procedures
 discrimination 258
 grievance procedures for admissions,
 privacy rights and other
 non-academic matters 257
 student administrative withdrawals 257
 Student Code of Conduct
 academic honesty 242
 plagiarism and cheating 242

- Teacher Resource and
Activity Center (TRAC) 211
- Teaching Field Courses 150-158
- Teacher Support Specialist Add-on
Program 128
- Telecommunication Policies
(KSU) 37
- Time Limit for Degree
Completion 12, 28
- Transfer Credit 28
See also individual degree
program requirements
- Transient Student Status 10
- Tuition and Fees
2007-2008 expenses/ fees 1
1
diploma fee 16
diploma replacement fee 16
fax fee 16
1
late payment fee 16
late registration fee 16
mandatory student fees 14
Master of Accounting Fees 1

Computer Science program fees 16
Master of Science in Conflict
Management program fees 1

program fees 1
1
penalty fee for returned check 16
registration fee waiver for senior citizens 16
residency requirement 28
student health fees 14
student motor vehicle fee 14
summary of expenses 2007-2008 14
1